

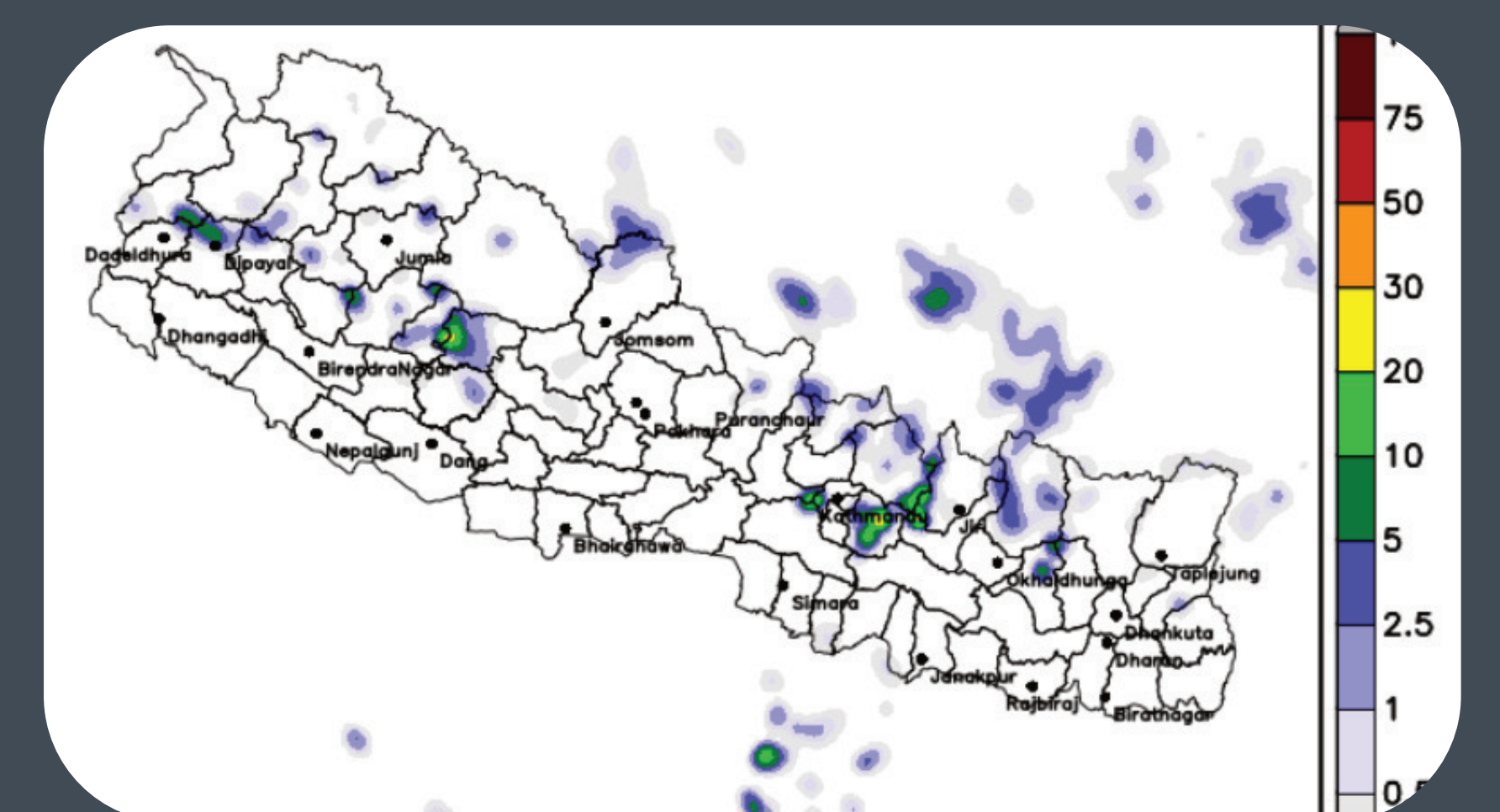
# Digital application for the optimal integration of gender sensitive Community Based Landslide Early Warning System (CBLEWS) & Household Disaster Preparedness and Response Plan (HDPRP)

Landslides are among the most prominent and recurring hazards in Nepal, often resulting in disasters. Most of the rain-induced landslides occur during the monsoon season (June–September) when Nepal receives 80% of its total annual rainfall. However, shifts in rainfall patterns and increased intensity and frequency of heavy rains are contributing to landslide events beyond the Monsoon seasons. The developed system can trickle down the precipitation forecast data, and ensure it is contextualized and actionable to affected communities and households. Together with the precipitation forecasts, the tool also provides household (HH) level categorization and early action planning to landslides risks based on HH vulnerability and capacity so that anticipatory actions will be targeted on the basis of actual and specific needs considering exposure, gender, age, caste, and other specific identities of the affected population rather than taking a blanket approach.

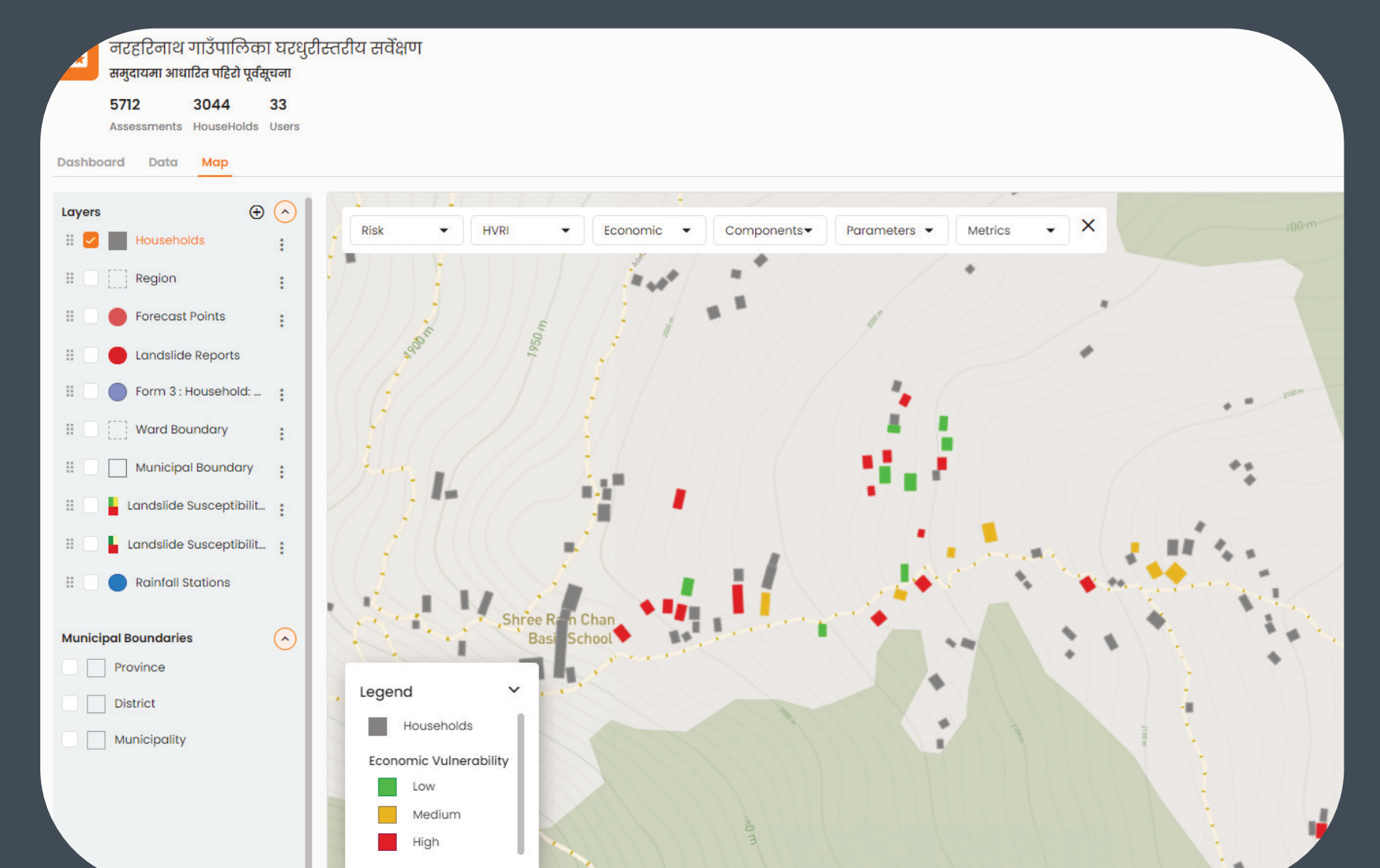
## Major Activities



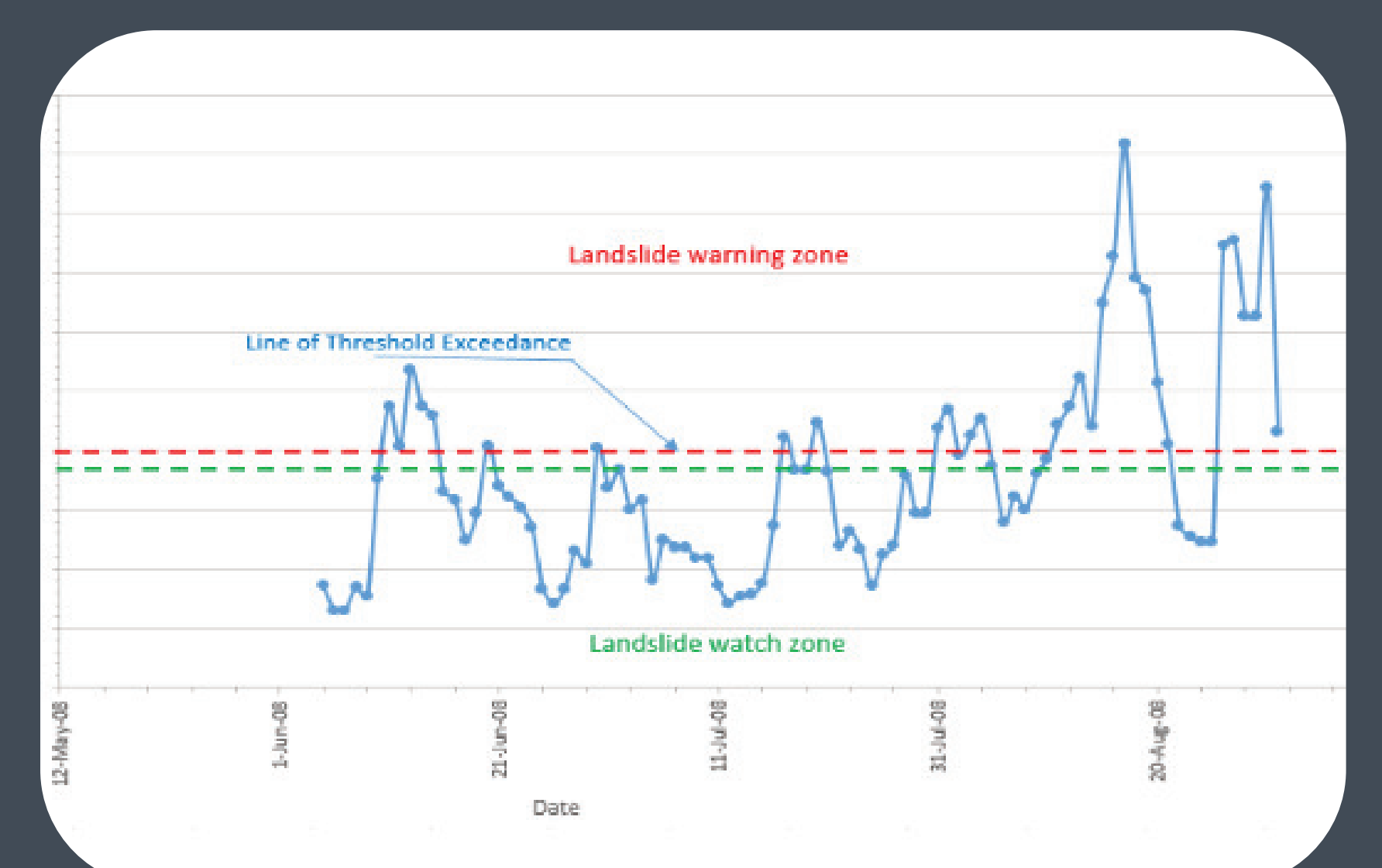
High resolution: Landslide susceptibility Model & Zonation



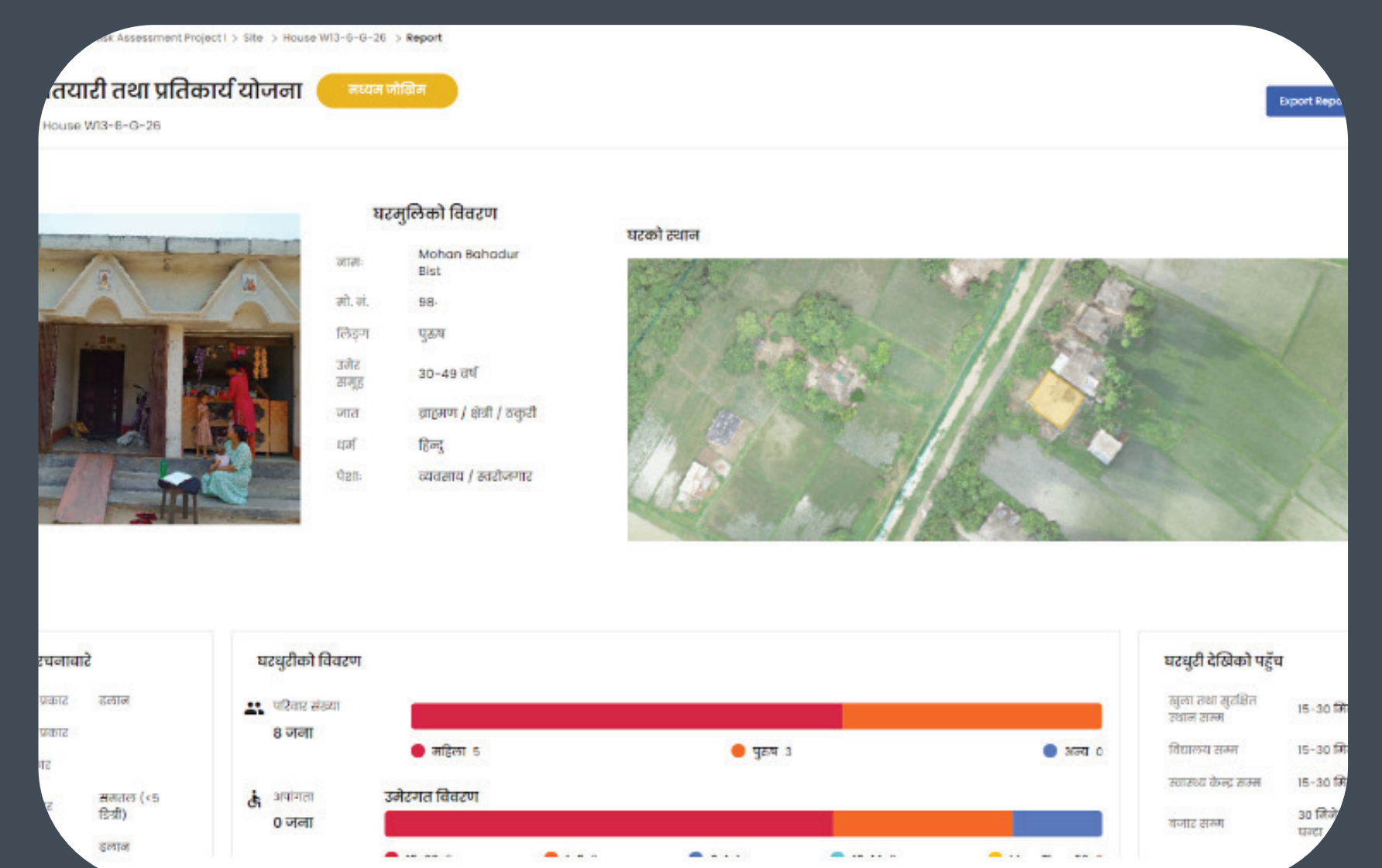
Integration of DHM Forecast



Household Survey & Generation of vulnerability score.



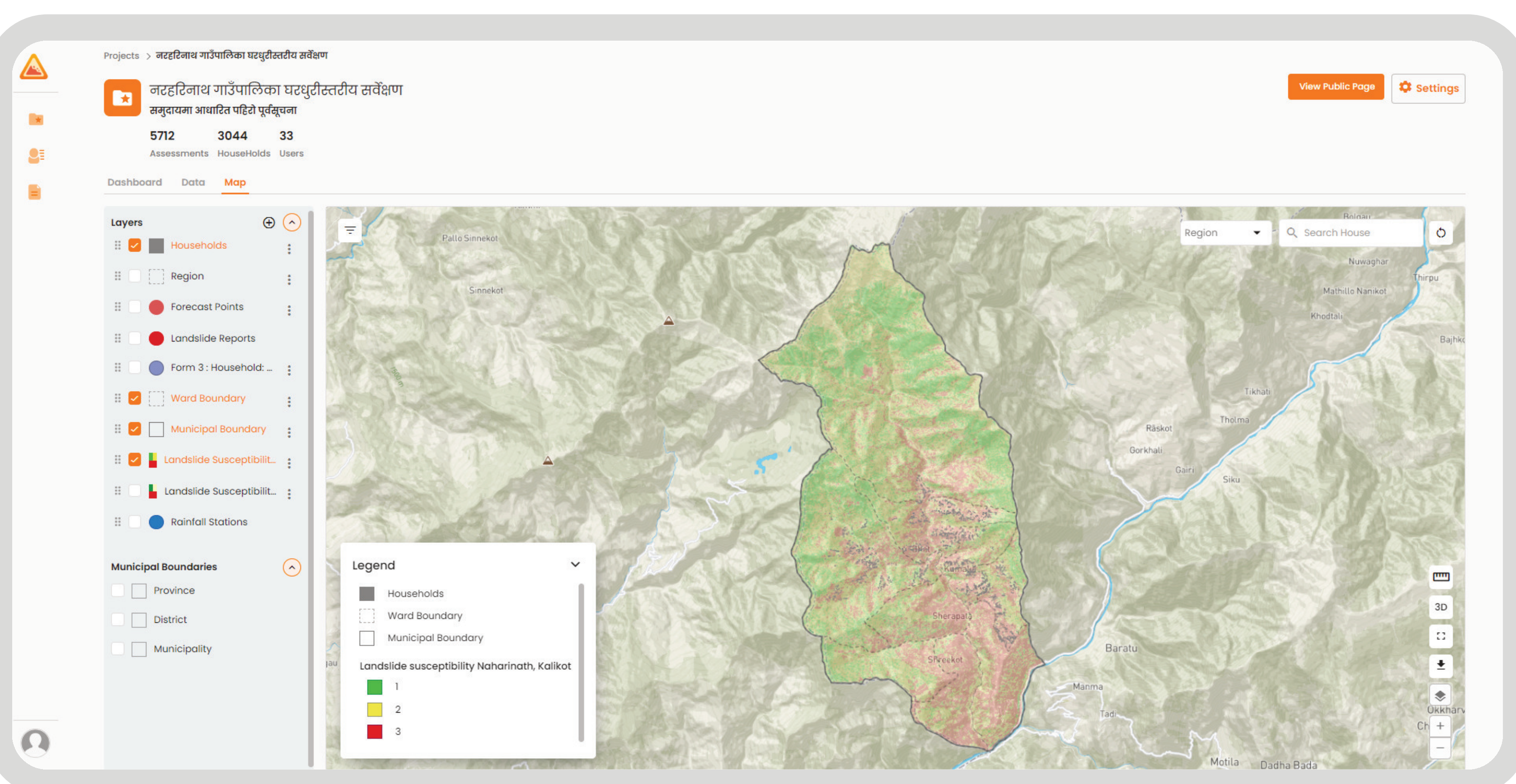
Definition of Threshold & Triggers



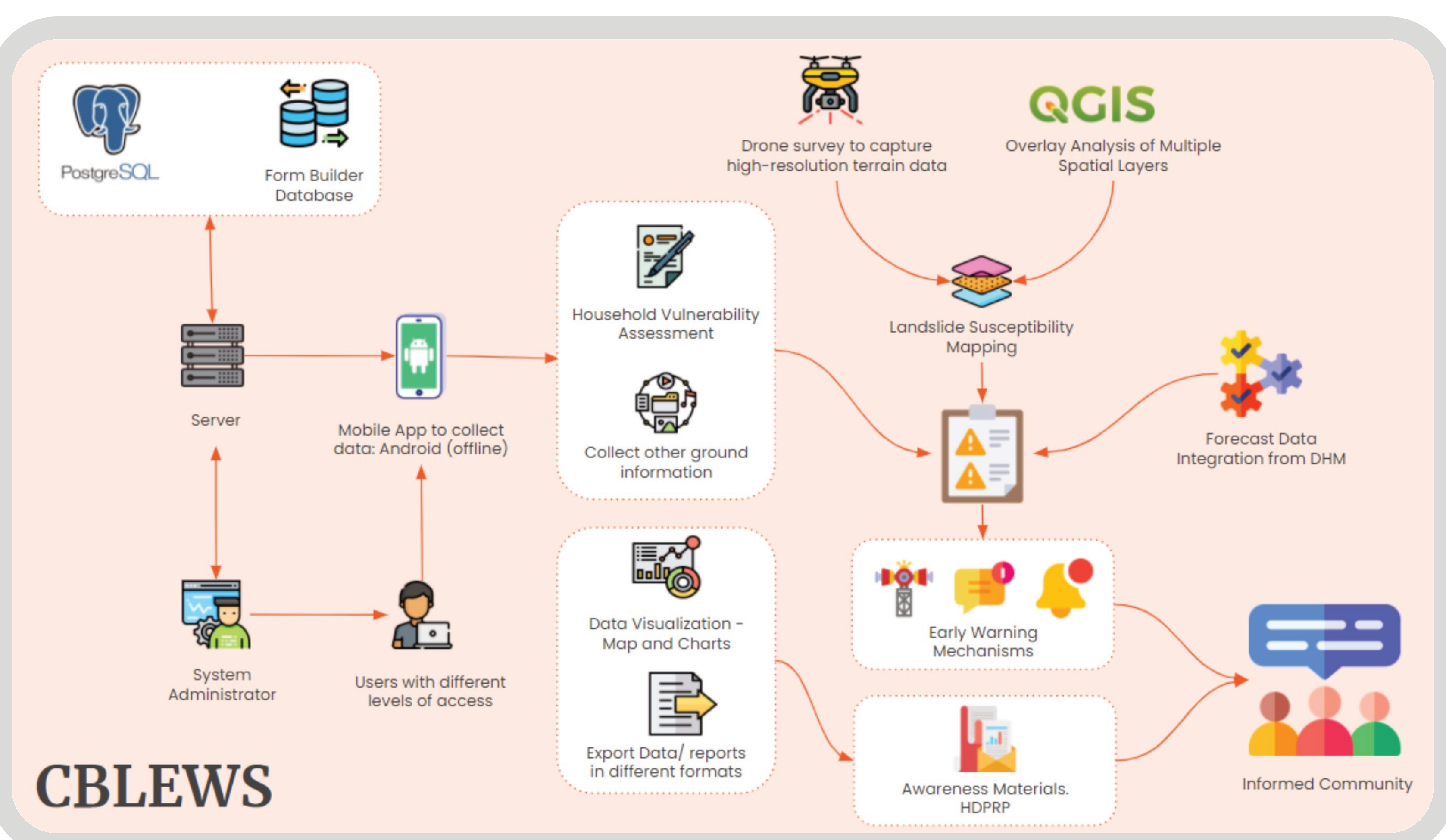
Household Level Disaster Preparedness & Response Plan (HDPRP)



Simulation Exercises to End Community Users



## Overall Methodology



## Features

- CBLEWS Mobile Application to carry out Household Survey
- “Landslide Report” feature: for developing spatial inventory of the landslides nearby
- User Login System for the stakeholders and Dynamic Section for setting Thresholds
- Integrate and Visualize Layers of Susceptibility, Vulnerability, Forecast and so on.
- Developing a standard Early Warning Messages for the Red, Yellow and Green Households
- Web Dashboard for Decision Support System (identify the needy and vulnerable groups to plan for the Early Action)

## About the Anticipatory Action (AA) tool

This tool, Anticipatory Action for Landslides in Nepal has been developed under the support of START Network, Plan International, NAXA Pvt. Ltd & Institute of Himalayan Risk Reduction (IHRR).