

A close-up photograph of a young woman with dark hair tied back, wearing a light blue shirt. She has blue body paint or face paint on her right cheek and is looking over her shoulder with a slight smile. The background is a blurred green, suggesting an outdoor setting with foliage.

2.5 MILLION REASONS

COUNTRY STRATEGY (2021-2026)

STRATEGICALLY PARTNER TO EMPOWER

2.5 MILLION GIRLS ESPECIALLY ADOLESCENT GIRLS AND YOUNG WOMEN
IN CAMBODIA

2.5 MILLION
REASONS

STRATEGICALLY PARTNER TO EMPOWER

2.5 MILLION GIRLS

ESPECIALLY ADOLESCENT GIRLS AND YOUNG WOMEN

IN CAMBODIA 2021-2026

WHO...

IS PLAN INTERNATIONAL AND PLAN INTERNATIONAL CAMBODIA?





Plan International is a development and humanitarian organization that is active in more than 75 countries across the world. Plan International began working in Cambodia in 2002, with the name of Plan International Cambodia.



Every year Plan International Cambodia's work benefits more than 200,000 children and reaches nearly 80,000 families in more than 580 communities across Cambodia.



Plan International's global goal is a just world that advances children's rights and equality for girls.



To achieve the goal of helping children be able to exercise their rights including equality for girls, Plan International builds mutually respectful and professional partnerships.



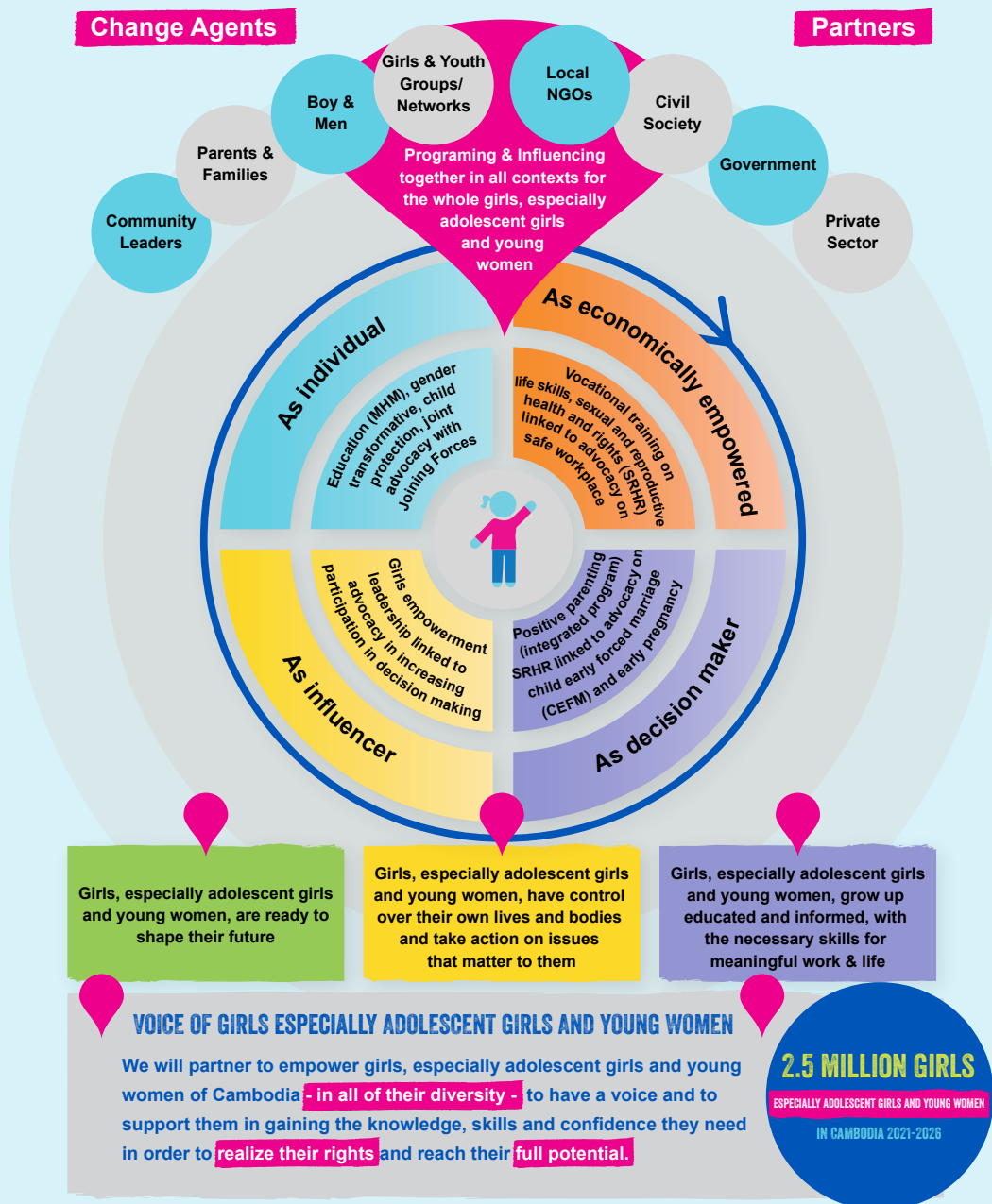
Plan International believes that cooperating with individuals, communities, other NGOs, civil society (such as child clubs and youth groups), and government is an essential part of development.

AMBITION

WHAT IS PLAN INTERNATIONAL
CAMBODIA'S AMBITION?



The Country Strategy 2021-2026 will continue to build its evidence-based models adapted to the dynamic and youthful Cambodian context.
Theory of change in Strategic Plan is below:



PLAN INTERNATIONAL CAMBODIA'S AMBITION OVER THE NEXT FIVE YEARS FOR GIRLS ESPECIALLY ADOLESCENT GIRLS AND YOUNG WOMEN

"TO PARTNER STRATEGICALLY"

This means that Plan International Cambodia collaborates with key groups to have faster and more sustainable transformation for girls, especially adolescent girls and young women, in Cambodia. The groups that Plan International Cambodia will cooperate with include child clubs, youth organizations, civil society organizations, universities, private businesses, and government.



"TO EMPOWER GIRLS, ESPECIALLY ADOLESCENT GIRLS AND YOUNG WOMEN OF CAMBODIA"

This means that Plan International Cambodia works with girls, especially adolescent girls and young women, to discover that they have strength and knowledge within themselves, and works to enable girls, especially adolescent girls and young women, to independently make their own choices about their life, relationships, education, employment, etc.



“TO INCLUDE ALL OF THEIR DIVERSITIES”



This means that Plan International Cambodia recognizes there is diversity among girls, especially adolescent girls and young women. NOT EVERYONE IS THE SAME! Plan International Cambodia's focus will be to work with girls, especially adolescent girls and young women, who experience discrimination and poverty, and especially those who are being left behind. That includes indigenous ethnic minority groups, people who live in remote areas that do not have many services, people who have a disability, and lesbian, gay, bisexual, transgender, intersex (LGBTIQ).

“TO HAVE A VOICE”



This means that Plan International Cambodia will work together with girls, especially adolescent girls and young women, to achieve equal rights; Plan International Cambodia will support them to be able to speak confidently and with knowledge about issues; and to become leaders; and be role models for others.

“TO SUPPORT THEM IN GAINING THE KNOWLEDGE, SKILLS AND CONFIDENCE THEY NEED”

This means that Plan International Cambodia will focus on work with girls, especially adolescent girls and young women, to gain the knowledge, skills, and confidence they need to be well prepared for the future they choose.



“TO REALIZE THEIR RIGHTS AND REACH THEIR FULL POTENTIAL”

This means that Plan International Cambodia will collaborate with girls, especially adolescent girls and young women, to access all four baskets of child rights (survival, protection, development, and participation), so that they have the ability to define and then achieve their ambitions and dreams.



2.5 MILLION GIRLS

ESPECIALLY ADOLESCENT GIRLS AND YOUNG WOMEN IN CAMBODIA

Plan International Cambodia aims to help 2.5 million girls, especially adolescent girls and young women (direct beneficiaries 1 million and indirect 1.5 million) **Learn, Lead, Decide, and Thrive**. Ultimately, they can develop their competency and resilience for adulthood.



**GIRLS AND WOMEN
GET EQUAL RIGHTS
AS BOYS AND MEN**



**GIRLS AND WOMEN
GET EQUAL OPPORTUNITIES
AS BOYS AND MEN**

LEARN

LEAD

DECIDE

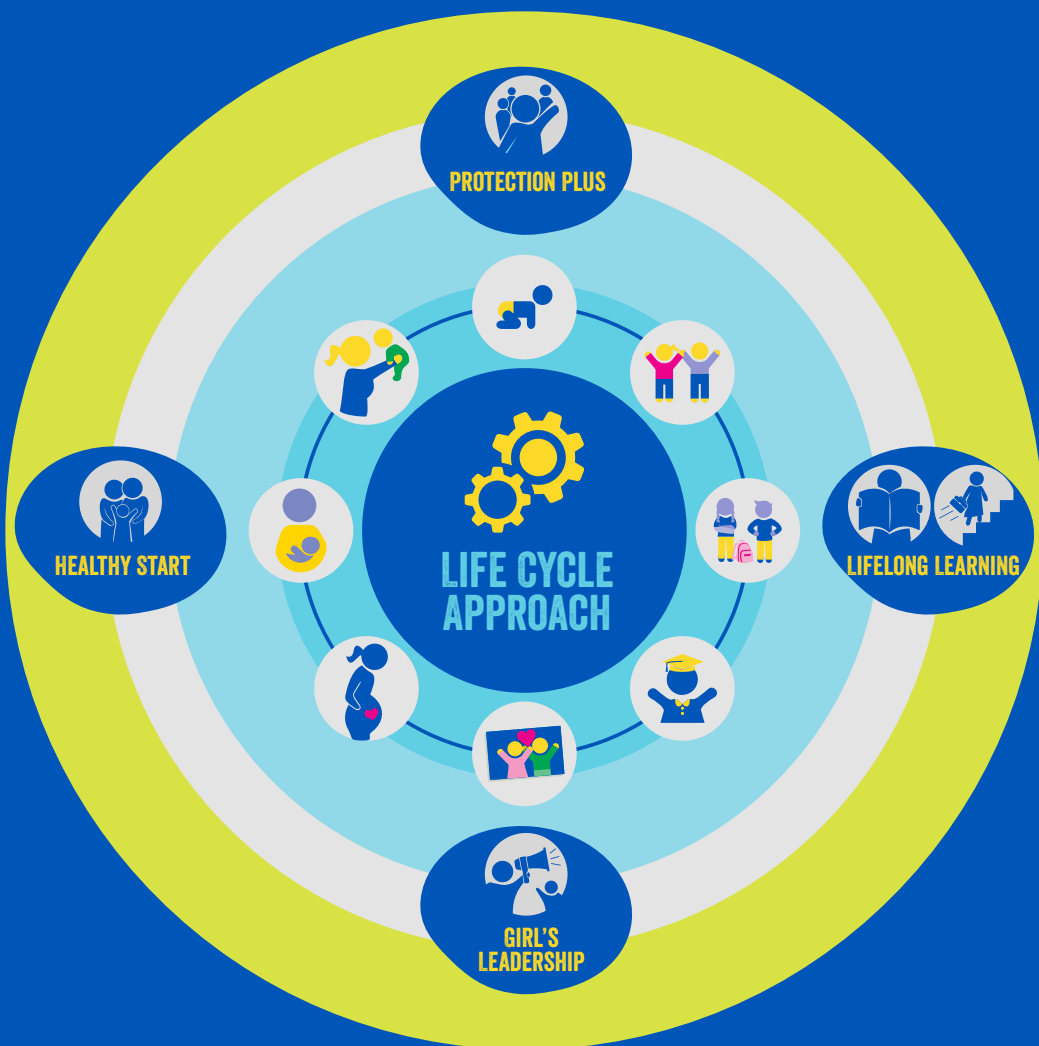
THRIVE

CORE PROGRAMS AND APPROACH

WHAT ARE PLAN INTERNATIONAL CAMBODIA'S
CORE PROGRAMS AND APPROACH?



PLAN INTERNATIONAL CAMBODIA'S CORE PROGRAMS





HEALTHY START

Primary impact group(s): Young parents aged 15-24 years and their children aged under 6 years.

- Gender-responsive parenting/caregiving education
- Early learning (community preschool) and transition to primary school
- Strengthening the maternal, newborn, child health and nutrition services
- Supporting effective social and behavior change interventions to increase community-wide use of at least basic sanitation and hygiene facilities
- Influencing in favour of comprehensive gender transformative early childhood development policy and strengthened social protection and sector-specific policy (for instance early education, nutrition and water, sanitation, and hygiene - WASH) is a key strategy across each of these components.





PROTECTION PLUS

Primary impact group(s): Girls, boys and youths aged under 24 years.

- Preventing and responding to family violence and gender-based violence (GBV), child early forced marriage, online sexual exploitation against children, adolescent girls and young women
- Promoting positive parenting
- Providing with the best quality support services (psychosocial support, social work, referral for legal support) and digital reporting mechanism
- Advocating to decision makers at all levels for the implementation of strong, gender-responsive legal and policy frameworks.





LIFELONG LEARNING

Primary impact group(s): Girls, boys and youths aged 6-24 years.

- Improving gender-transformative teaching and inclusive learner-centered methodologies, social and emotional learning
- Supporting accessible, protective, and safe schools
- Strengthening school entry/re-entry mechanisms including accelerated learning
- Supporting development and quality of alternative education opportunities; and promoting and supporting community-led education initiative
- Strengthening school governance to foster effective and inclusive school management
- Providing demand-driven, quality and relevant training to build skills and capabilities
- Bolstering support from parents, primary caregivers and male family members for girls' and young women's social and employment prospects
- Engaging the private sector in developing, assessing and certifying skills-based training for young people
- Advocating national and local governments to improve gender transformative and inclusive labor market policies.





GIRLS LEADERSHIP

Primary impact group(s): Adolescent girls and young women aged 12-24 years.

- Equipping adolescents and youth as individuals and groups to build and use their agency, connections, and resources to transform unequal power relations
- Engaging families, caregivers and communities to support young people, especially young women, in their social change works
- Working with media, in particularly, to promote the voice and the interests of youth and their social change and equality effort
- Supporting youth's organizations/ groups to put youth's issues on the political agenda through policy dialogues, advocacy work, social and public accountability mechanisms.



HOW TO SUPPORT

HOW WILL PLAN INTERNATIONAL CAMBODIA'S
CORE PROGRAMS AND APPROACH SUPPORT
PEOPLE?



“COMPREHENSIVE AND HOLISTIC APPROACH”

PLAN INTERNATIONAL CAMBODIA HAS DEVELOPED FOUR CORE INTEGRATED PROGRAMS

which each combine various technical sectors to promote a more comprehensive and holistic set of aims and services for our target groups in 2021-2026.

KEY INTERVENTIONS OF CORE PROGRAMS AND TARGET GROUPS



HEALTHY START

(Integrated programming across the sectors of nutrition, early childhood care & development (ECCD), and water, sanitation, and hygiene (WASH)) focus on young parents aged 15-24 years and their children aged under 6 years.

1

2



PROTECTION PLUS

(Online child sexual exploitation and abuse (OCSE), lesbian, gay, bisexual, transgender, intersex (LGBTIQ), child early forced marriage (CEFM), children left behind including cross-border programming) focus on girls, boys and youths aged under 24 years.

3



LIFELONG LEARNING

(Inclusive & quality education literacy (IQE), technical & vocational educational training (TVET), life skills, i.e., entrepreneurship) for gainful wage- & self-employment, and sexual and reproductive health and rights (SRHR)) focus on girls, boys and youths aged 6-24 years.

4



GIRLS LEADERSHIP

(Empowerment and leadership, active citizenship and civic participation) focus on adolescent girls and young women aged 12-24 years.

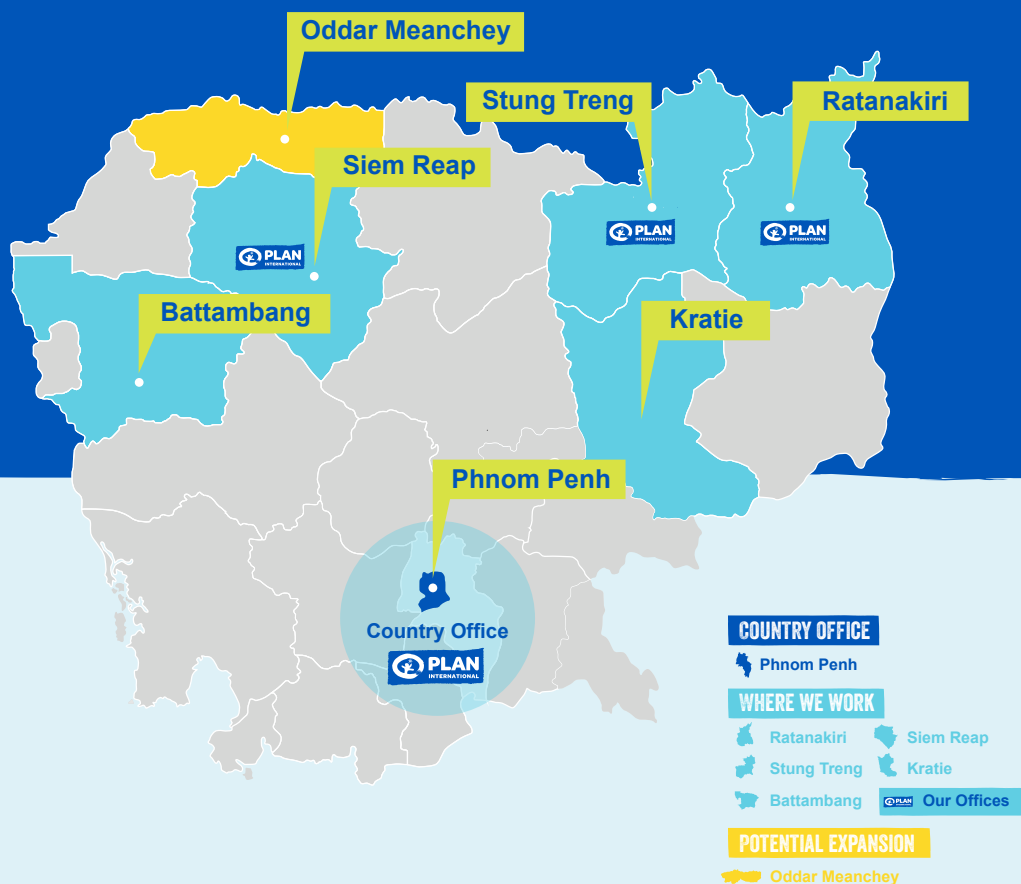


Climate change, resilience and environmental sustainability will become part of every project in Plan International Cambodia, especially Lifelong Learning and Girls Leadership.

WHERE

WHERE ARE OUR STRATEGIC INTERVENTION AREAS?

Under the new Country Strategy, Plan International Cambodia will continue to implement our sponsorship funded programs in the provinces of Ratanakiri, Stung Treng and Siem Reap, possibly expanding to Oddar Meanchey. Our grant-funded projects will be implemented in the same provinces plus Battambang, Kratie and potentially other locations.





WHY DID PLAN INTERNATIONAL CAMBODIA DECIDE TO FOCUS ON GIRL'S RIGHTS, ESPECIALLY FOR ADOLESCENT GIRLS AND YOUNG WOMEN?



IT IS BECAUSE

- Girls and women experience more violence than boys and men.
- Girls and women are more often discriminated against than boys and men in every part of life – social, economic, political, cultural, and spiritual.
- Girls and women have significantly less opportunity for education than boys and men.
- Girls and women do not receive the same respect nor are given the same social value as boys and men.
- The ideas and opinions of girls and women are not listened to with the same interest or seriousness as the ideas and opinions of boys and men.
- Girls and women receive less pay than boys and men for doing exactly the same work.
- Girls and young women are usually ignored in Government Policy documents.
- Girls and young women have more difficulty than boys and young men to access their rights, due to social, cultural, and political reasons.

**THIS IS NOT RIGHT !
IT IS TIME**

**GIRLS AND WOMEN
GET EQUAL RIGHTS!**



Plan International is a development and humanitarian organization that advances children's rights and equality for girls, and does not tolerate any form of violence against children or young people.

COUNTRY STRATEGY 2021-2026

2.5 MILLION
REASONS

STRATEGICALLY PARTNER TO EMPOWER

2.5 MILLION GIRLS

ESPECIALLY ADOLESCENT GIRLS AND YOUNG WOMEN

IN CAMBODIA 2021-2026



+855 (0) 23 217 214



www.plan-international.org/cambodia



Plan International Cambodia



Plan International Cambodia



Plan International Cambodia



Plan International Cambodia