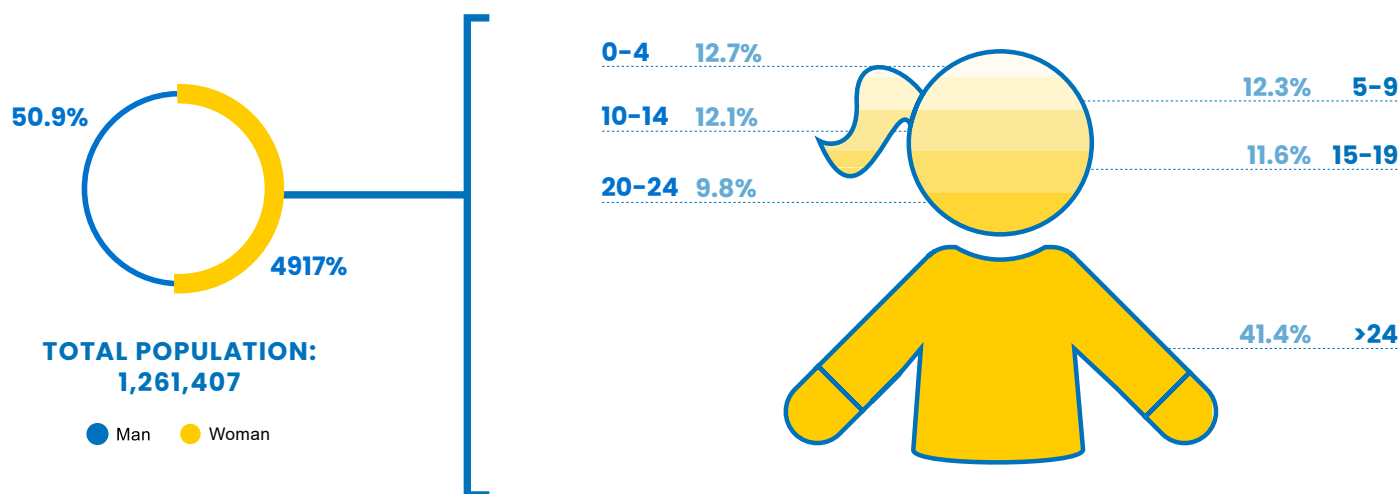


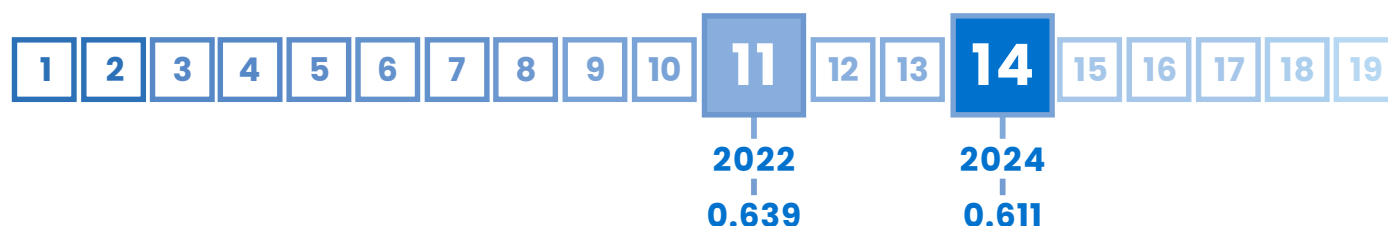
14 Timor-Leste

GLI
INDEX
0.611

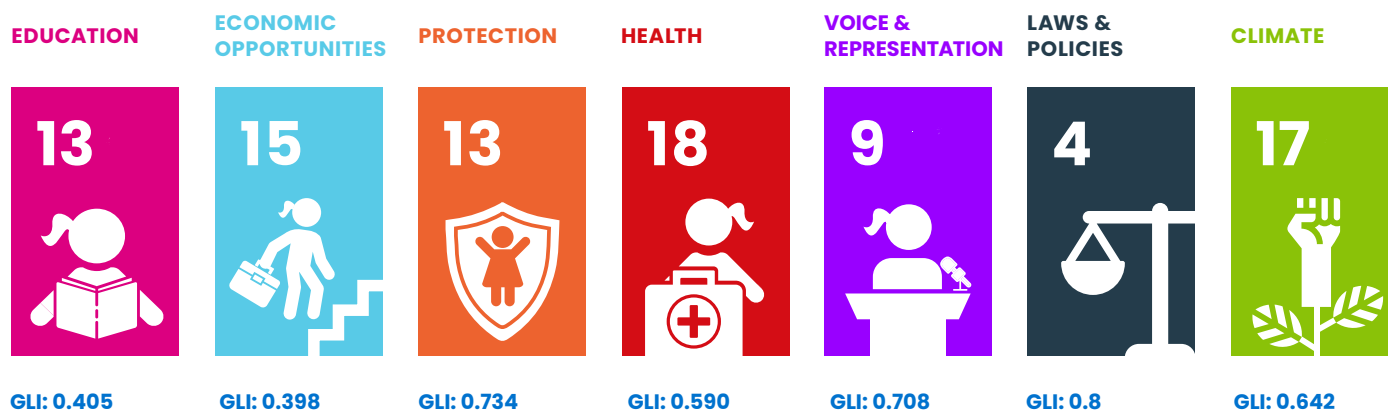
RANK
#14



TIMOR-LESTE'S POSITION IN ASIA'S RANKING:



TIMOR-LESTE'S PERFORMANCE PER AREA:










TIMOR-LESTE'S PERFORMANCE IN OTHER INDEXES:

HDI
0.566
(Rank 155)

GDI
0.904
(Group 4)

GII
0.415

GDP/Capita
1,649

Domain	Rank Indicator	Indicator Value	Index
 EDUCATION	9 ▼ Completion Rate, Lower Secondary Female	94.6%	0.943
	14 = Gross enrolment ratio for tertiary education, Female	14.8%	0.148
	7 = Access to Internet, Female	27.5%	0.275
	16 = Mean years of schooling, Female	3.8 years	0.253
 ECONOMIC OPPORTUNITIES	9 ▼ Share of youth not in employment, education or training (youth NEET rate), Female	29.2%	0.708
	16 ▼ Youth Labour Participation Rate, Female	18.6%	0.186
	- - Account ownership at a financial institution or with a mobile-service provider, Female	-	-
	12 ▼ Female share of employment in managerial positions	22.4%	0.299
 PROTECTION	10 ▼ Percentage of girls aged 5-17 years engaged in child labour	10.0%	0.800
	5 = Percentage of women aged 20-24 who were married before age 18	15.0%	0.833
	13 ▲ Percentage of the female population ages 15 and older that has ever experienced physical and/or sexual violence from an intimate partner	34.6%	0.568
 HEALTH	11 ▲ Adolescent birth rate of woman aged 15-19	33.3 births per 1,000 women	0.834
	15 = Proportion of women aged 15 - 19 years who have their need for family planning satisfied with modern methods	22.1	0.221
	19 ▲ Prevalence of stunting, height for age, Female	45.1% of children under 5	0.356
	7 = Suicide Mortality Rate (15-19), Female	2.0 per 100,000 female population	0.950
 VOICE & REPRESENTATION	1 = Proportion of seats held by women in national parliaments	38.5	0.513
	1 = Woman's testimony carries the same evidentiary weight in court as a man's	Yes	1.000
	16 = Proportion of girls under 5 years of age whose births have been registered with a civil authority	61.0	0.610
 LAWS & POLICIES	1 = Equal rights between sons and daughters to inherit assets from parents	Yes	1.000
	1 = Equal remuneration for work of equal value	Yes	1.000
	1 = Legislation on sexual harassment in employment	Yes	1.000
	8 ▼ Female share of employment in managerial positions	No	0.000
	1 = Legislation specifically addressing domestic violence	Yes	1.000
 CLIMATE	11 ▼ Number of deaths and missing persons attributed to disasters	5.2 per 100,000 population	0.990
	8 ▲ Number of directly affected persons attributed to disasters per 100,000 population	71.1	0.997
	17 ▲ Proportion of population with primary reliance on clean fuels and technology	17.7%	0.177
	10 = Terrestrial and marine protected areas	5.2% of total territorial area	0.052
	2 ▲ Carbon dioxide emissions, production emissions per capita	0.3 tonnes	0.990
	1 = Countries with NDC to Paris Declaration on Climate Change (2021 updated)	Yes	1.000



Plan International's 2024 Girls' Leadership Index (GLI) provides a unique dive into the barriers and opportunities shaping the leadership potential of adolescent girls and young women.

Based on data from 33 countries across the Asia-Pacific region, the findings paint a picture of progress punctuated by persistent inequalities, offering a sobering reminder of the work still required to break entrenched cycles of gender disparity.

Report available at:
plan-international.org/publications/2024-girls-leadership-index-report/