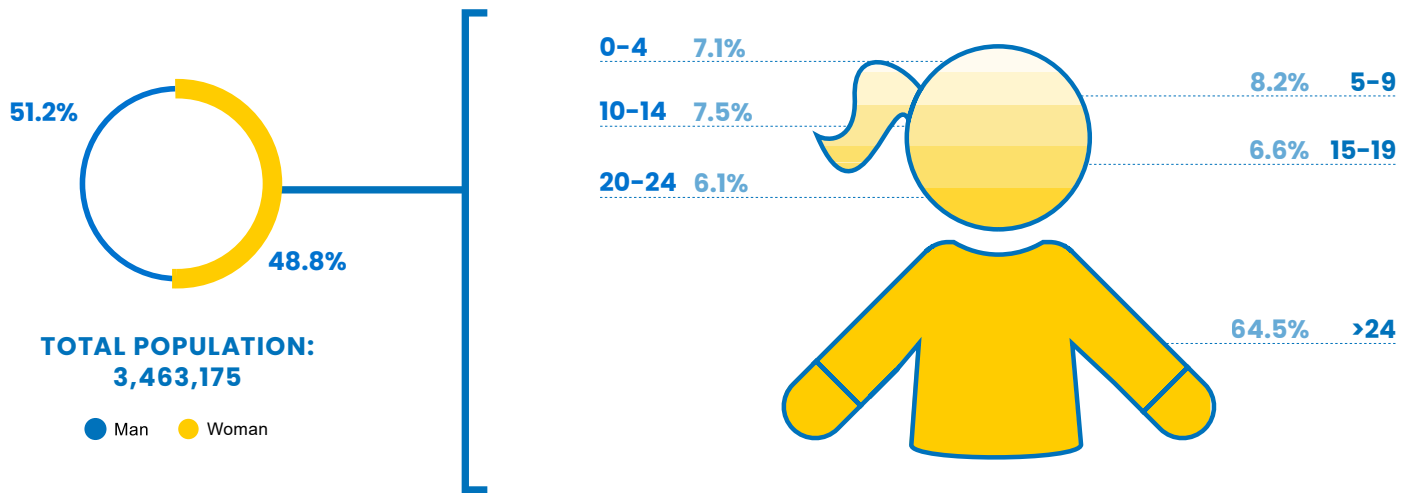


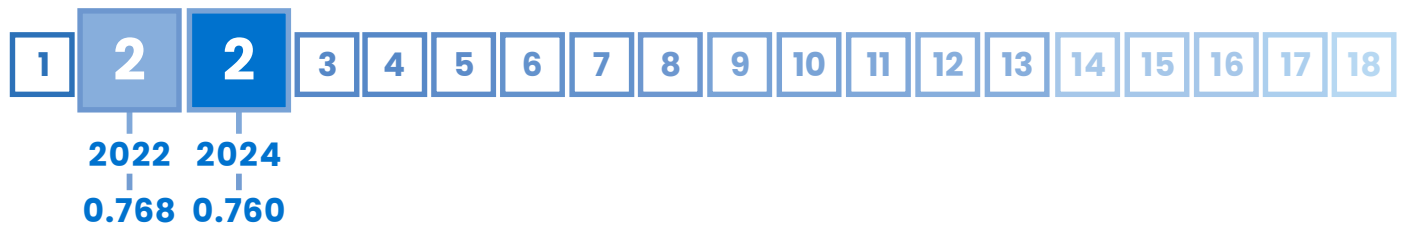
2 Thailand

GLI
INDEX
0.760

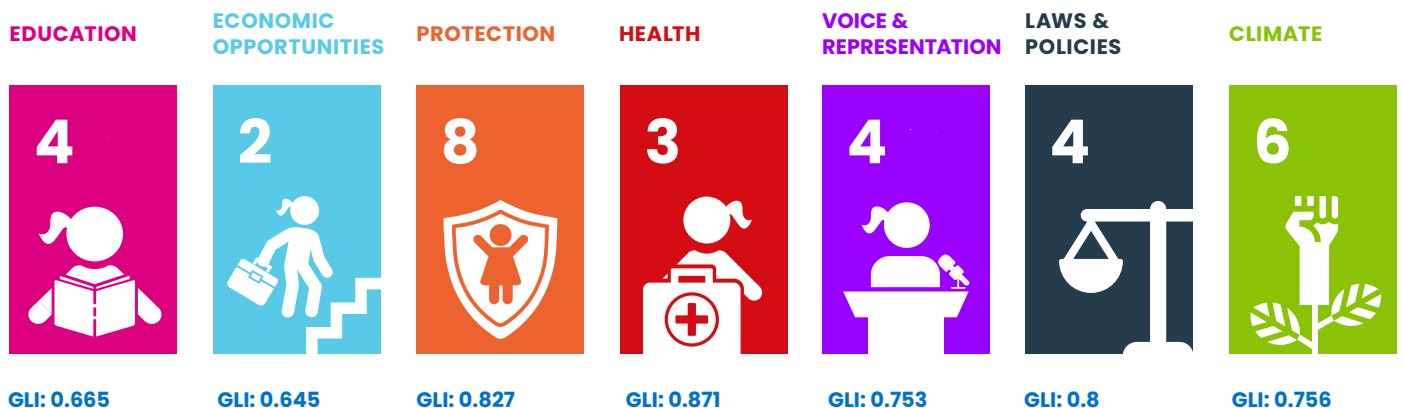
RANK
#2



THAILAND'S POSITION IN ASIA'S RANKING:



THAILAND'S PERFORMANCE PER AREA:










THAILAND'S PERFORMANCE IN OTHER INDEXES:

HDI
0.803
(Rank 66)

GDI
1.011
(Group 1)

GII
0.31

GDP/Capita
7,172

Domain	Rank	Indicator	Indicator Value	Index
 EDUCATION	1 ▲	Completion Rate, Lower Secondary Female	131.7%	1.000
	2 ▼	Gross enrolment ratio for tertiary education, Female	56.8%	0.568
	3 ▼	Access to Internet, Female	50.0%	0.500
	6 ▲	Mean years of schooling, Female	8.9 years	0.593
 ECONOMIC OPPORTUNITIES	5 ▲	Share of youth not in employment, education or training (youth NEET rate), Female	15.5%	0.845
	9 ▲	Youth Labour Participation Rate, Female	34.5%	0.345
	2 =	Account ownership at a financial institution or with a mobile-service provider, Female	92.7%	0.927
	4 ▼	Female share of employment in managerial positions	34.7%	0.463
 PROTECTION	9 =	Percentage of girls aged 5-17 years engaged in child labour	7.9%	0.842
	9 ▲	Percentage of women aged 20-24 who were married before age 18	17.0%	0.811
	- -	Percentage of the female population ages 15 and older that has ever experienced physical and/or sexual violence from an intimate partner	-	-
 HEALTH	8 ▲	Adolescent birth rate of woman aged 15-19	31.6 births per 1,000 women	0.842
	1 ▲	Proportion of women aged 15 - 19 years who have their need for family planning satisfied with modern methods	88.2	0.882
	3 ▲	Prevalence of stunting, height for age, Female	11.8% of children under 5	0.831
	12 ▲	Suicide Mortality Rate (15-19), Female	2.9 per 100,000 female population	0.928
 VOICE & REPRESENTATION	11 ▲	Proportion of seats held by women in national parliaments	19.4	0.259
	1 =	Woman's testimony carries the same evidentiary weight in court as a man's	Yes	1.000
	1 =	Proportion of girls under 5 years of age whose births have been registered with a civil authority	100.0	1.000
 LAWS & POLICIES	1 =	Equal rights between sons and daughters to inherit assets from parents	Yes	1.000
	1 =	Equal remuneration for work of equal value	Yes	1.000
	1 =	Legislation on sexual harassment in employment	Yes	1.000
	8 =	Female share of employment in managerial positions	No	0.000
	1 =	Legislation specifically addressing domestic violence	Yes	1.000
 CLIMATE	16 ▼	Number of deaths and missing persons attributed to disasters	12.5 per 100,000 population	0.975
	17 ▼	Number of directly affected persons attributed to disasters per 100,000 population	3809.1	0.848
	6 ▲	Proportion of population with primary reliance on clean fuels and technology	86.1%	0.861
	5 =	Terrestrial and marine protected areas	13.3% of total territorial area	0.133
	15 ▲	Carbon dioxide emissions, production emissions per capita	3.7 tonnes	0.877
	1 =	Countries with NDC to Paris Declaration on Climate Change (2021 updated)	Yes	1.000



Plan International's 2024 Girls' Leadership Index (GLI) provides a unique dive into the barriers and opportunities shaping the leadership potential of adolescent girls and young women.

Based on data from 33 countries across the Asia-Pacific region, the findings paint a picture of progress punctuated by persistent inequalities, offering a sobering reminder of the work still required to break entrenched cycles of gender disparity.

Report available at:
plan-international.org/publications/2024-girls-leadership-index-report/