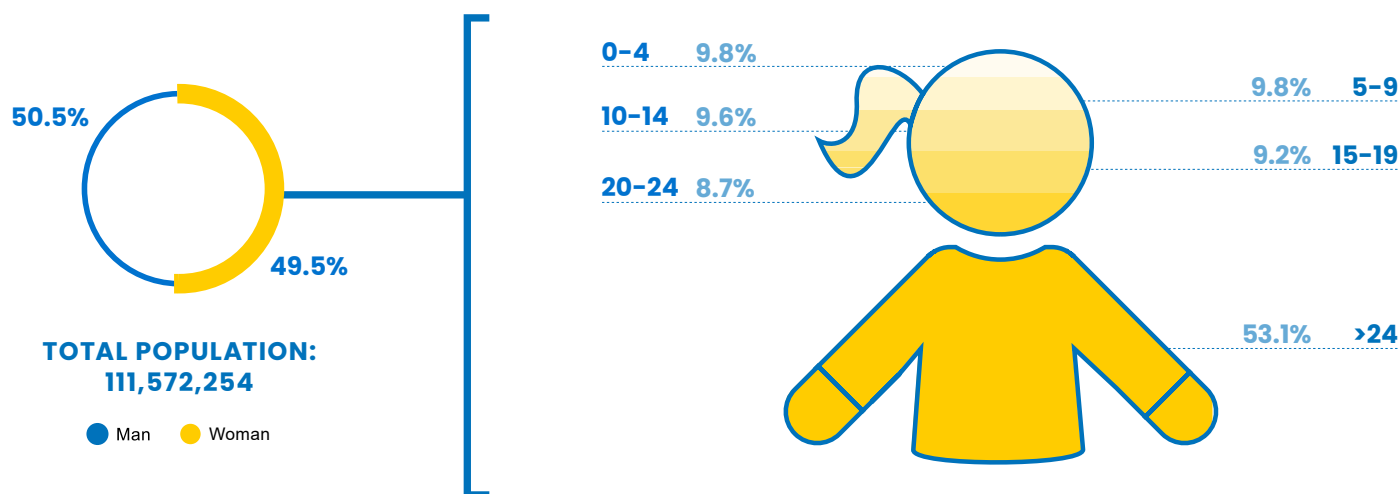


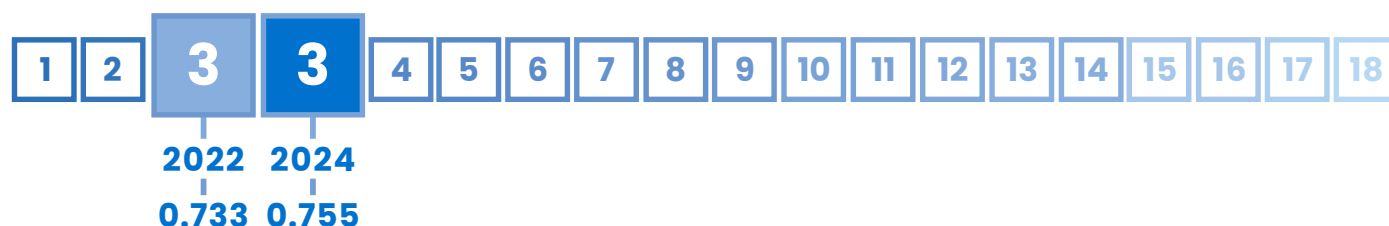
# 3 Philippines

GLI  
INDEX  
0.755

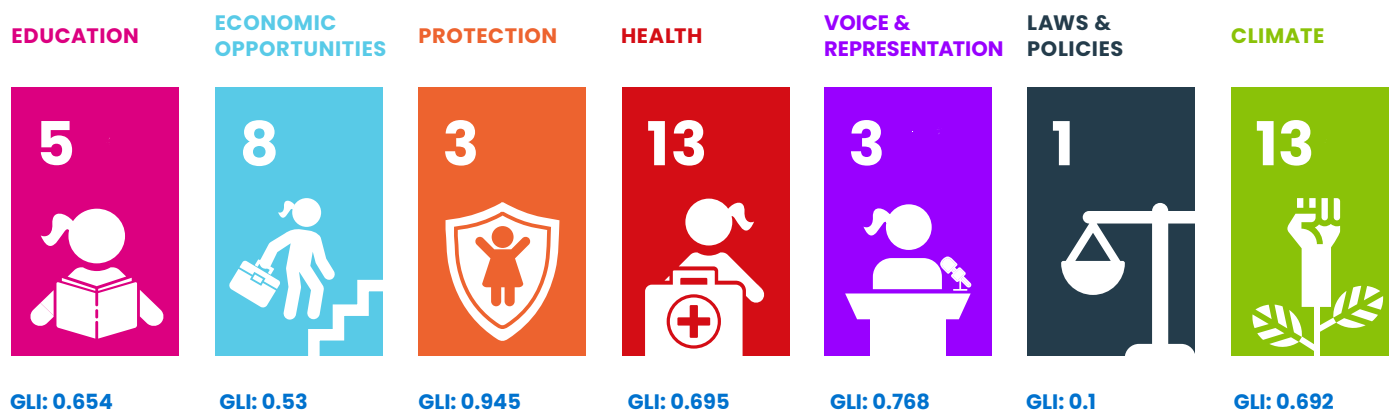
RANK  
#3



## PHILIPPINES' POSITION IN ASIA'S RANKING:



## PHILIPPINES' PERFORMANCE PER AREA:










## PHILIPPINES' PERFORMANCE IN OTHER INDEXES:

**HDI**  
0.71  
(Rank 113)

**GDI**  
0.966  
(Group 2)

**GII**  
0.388

**GDP/Capita**  
3,726

Domain	Rank	Indicator	Indicator Value	Index
 <b>EDUCATION</b>	1 ▲	Completion Rate, Lower Secondary Female	102.1%	1.000
	7 ▼	Gross enrolment ratio for tertiary education, Female	40.3%	0.403
	2 ▲	Access to Internet, Female	53.2%	0.532
	4 ▲	Mean years of schooling, Female	10.2 years	0.680
 <b>ECONOMIC OPPORTUNITIES</b>	6 ▲	Share of youth not in employment, education or training (youth NEET rate), Female	15.4%	0.846
	12 ▲	Youth Labour Participation Rate, Female	25.2%	0.252
	9 =	Account ownership at a financial institution or with a mobile-service provider, Female	47.2%	0.472
	1 ▼	Female share of employment in managerial positions	41.3%	0.551
 <b>PROTECTION</b>	2 =	Percentage of girls aged 5-17 years engaged in child labour	0.7%	0.986
	3 ▲	Percentage of women aged 20-24 who were married before age 18	9.0%	0.900
	2 ▲	Percentage of the female population ages 15 and older that has ever experienced physical and/or sexual violence from an intimate partner	4.2%	0.948
 <b>HEALTH</b>	15 ▲	Adolescent birth rate of woman aged 15-19	48.1 births per 1,000 women	0.760
	10 ▼	Proportion of women aged 15 - 19 years who have their need for family planning satisfied with modern methods	46.3	0.463
	14 ▲	Prevalence of stunting, height for age, Female	28.8% of children under 5	0.589
	5 =	Suicide Mortality Rate (15-19), Female	1.2 per 100,000 female population	0.970
 <b>VOICE &amp; REPRESENTATION</b>	5 =	Proportion of seats held by women in national parliaments	27.3	0.364
	1 =	Woman's testimony carries the same evidentiary weight in court as a man's	Yes	1.000
	9 =	Proportion of girls under 5 years of age whose births have been registered with a civil authority	9.4	0.940
 <b>LAWS &amp; POLICIES</b>	1 =	Equal rights between sons and daughters to inherit assets from parents	Yes	1.000
	1 =	Equal remuneration for work of equal value	Yes	1.000
	1 =	Legislation on sexual harassment in employment	Yes	1.000
	1 =	Female share of employment in managerial positions	Yes	1.000
	1 =	Legislation specifically addressing domestic violence	Yes	1.000
 <b>CLIMATE</b>	6 ▼	Number of deaths and missing persons attributed to disasters	3.1 per 100,000 population	0.994
	19 ▲	Number of directly affected persons attributed to disasters per 100,000 population	6140.1	0.754
	9 ▲	Proportion of population with primary reliance on clean fuels and technology	59.1%	0.591
	14 =	Terrestrial and marine protected areas	3.7% of total territorial area	0.037
	9 ▲	Carbon dioxide emissions, production emissions per capita	1.2 tonnes	0.960
	1 =	Countries with NDC to Paris Declaration on Climate Change (2021 updated)	Yes	1.000



Plan International's 2024 Girls' Leadership Index (GLI) provides a unique dive into the barriers and opportunities shaping the leadership potential of adolescent girls and young women.

Based on data from 33 countries across the Asia-Pacific region, the findings paint a picture of progress punctuated by persistent inequalities, offering a sobering reminder of the work still required to break entrenched cycles of gender disparity.

Report available at:  
[plan-international.org/publications/2024-girls-leadership-index-report/](https://plan-international.org/publications/2024-girls-leadership-index-report/)