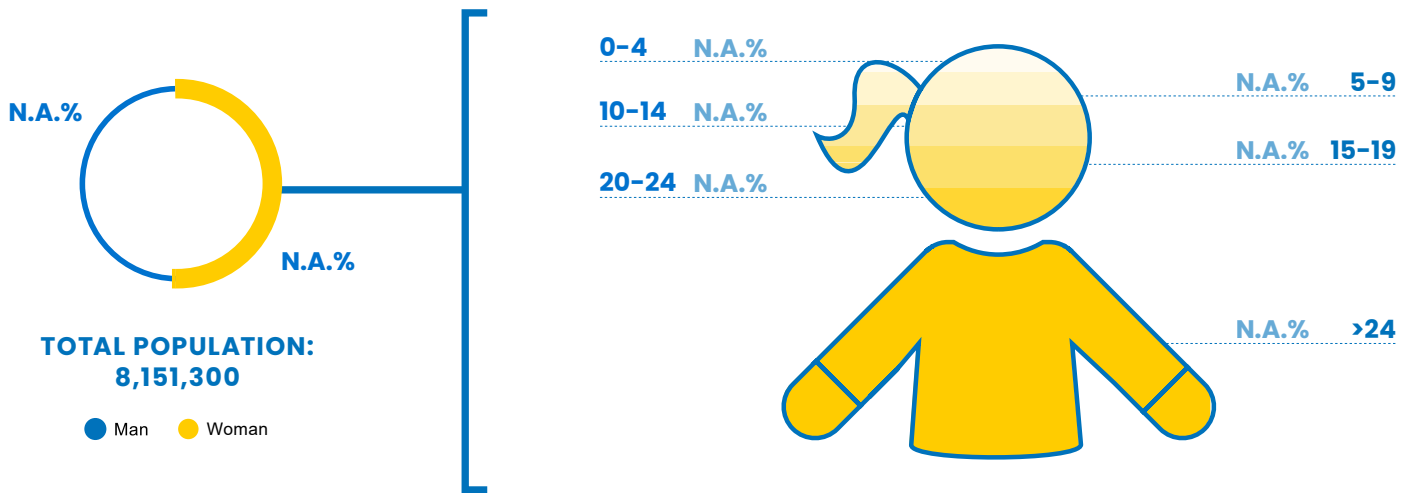


14 Papua New Guinea

GLI
INDEX
0.684

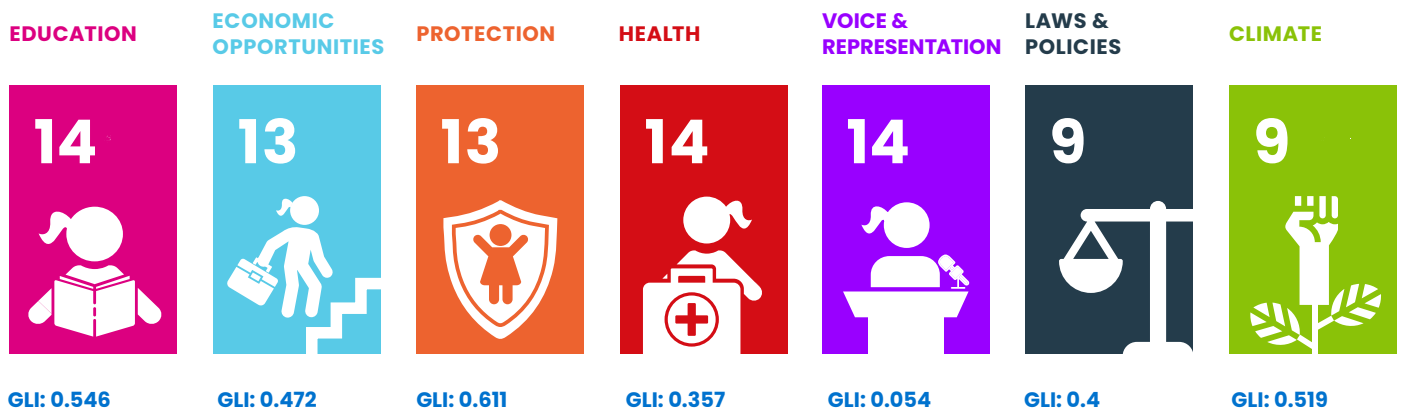
RANK
#14



PAPUA NEW GUINEA'S POSITION IN ASIA'S RANKING:



PAPUA NEW GUINEA'S PERFORMANCE PER AREA:










PAPUA NEW GUINEA'S PERFORMANCE IN OTHER INDEXES:

HDI
0.568
(Rank 154)

GDI
0.927
(Group 3)

GII
0.604

GDP/Capita
2,994

Domain	Rank Indicator	Indicator Value	Index
 EDUCATION	3 = Gross enrolment ratio, primary, female	106.9%	1.000
	13 ▼ Gross enrolment ratio, secondary, female	40.1%	0.401
	14 ▼ Out-of-school rate for youth of upper secondary school age, female	61.6%	0.384
	12 = Expected years of schooling, female	9.8 years	0.400
 ECONOMIC OPPORTUNITIES	6 ▼ Share of youth (15-24) not in employment, education or training, Female	31.2%	0.688
	12 ▼ Female share of employment in senior and middle management	17.7%	0.231
	5 = Law mandates equal remuneration for work of equal value	No	0.000
	2 Female youth unemployment (15-24 years)	3.0%	0.970
 PROTECTION	14 ▲ Percentage of the female population ages 15 and older that has ever experienced physical and/or sexual violence from an intimate partner	47.6%	0.524
	7 Percentage of the female population ages 15 and older that has ever experienced sexual violence from a nonintimate partner	14.4%	0.856
	12 = Proportion of women aged 20-24 years who were married or in a union before age 18	27.3%	0.454
 HEALTH	9 ▼ Adolescent birth rate	54.3 births per 1,000 women ages 15-19	0.565
	1 = Suicide Mortality Rate, female 15-19	1.6 per 100,000 female population	0.936
	10 ▼ Maternal mortality ratio	192.0 per 100,000 live births	0.000
	5 = Modern contraception prevalence rate (15-19 years)	16.5%	0.206
 VOICE & REPRESENTATION	13 ▲ Proportion of seats held by women in national parliaments	2.7	0.027
	11 = A woman can apply for a passport in the same way as a man	No	0.000
	10 = Proportion of girls under 5 years of age whose births have been registered with a civil authority	13.6	0.136
 LAWS & POLICIES	1 = Equal rights between sons and daughters to inherit assets from parents	Yes	1.000
	1 = Legislation establish clear criminal penalties for domestic violence	Yes	1.000
	6 = Legislation on sexual harassment in employment	No	0.000
	5 ▼ Laws prohibiting or invalidating child marriage	No	0.000
	5 = Laws prohibiting discrimination in access to credit based on gender	No	0.000
 CLIMATE	5 ▼ Number of deaths and missing persons attributed to disasters	6.6 per 100,000 population	0.960
	1 ▼ Number of directly affected persons attributed to disasters per 100,000 population	33.8 persons	0.995
	12 ▲ Proportion of population with primary reliance on clean fuels and technology	10.0%	0.561
	7 ▼ Terrestrial and marine protected areas	0.3% of total territorial area	0.010
	4 ▲ CO2 emissions	0.6 tonnes	0.963



Plan International's **2024 Girls' Leadership Index (GLI)** provides a unique dive into the barriers and opportunities shaping the leadership potential of adolescent girls and young women.

Based on data from 33 countries across the Asia-Pacific region, the findings paint a picture of progress punctuated by persistent inequalities, offering a sobering reminder of the work still required to break entrenched cycles of gender disparity.

Report available at:
plan-international.org/publications/2024-girls-leadership-index-report/