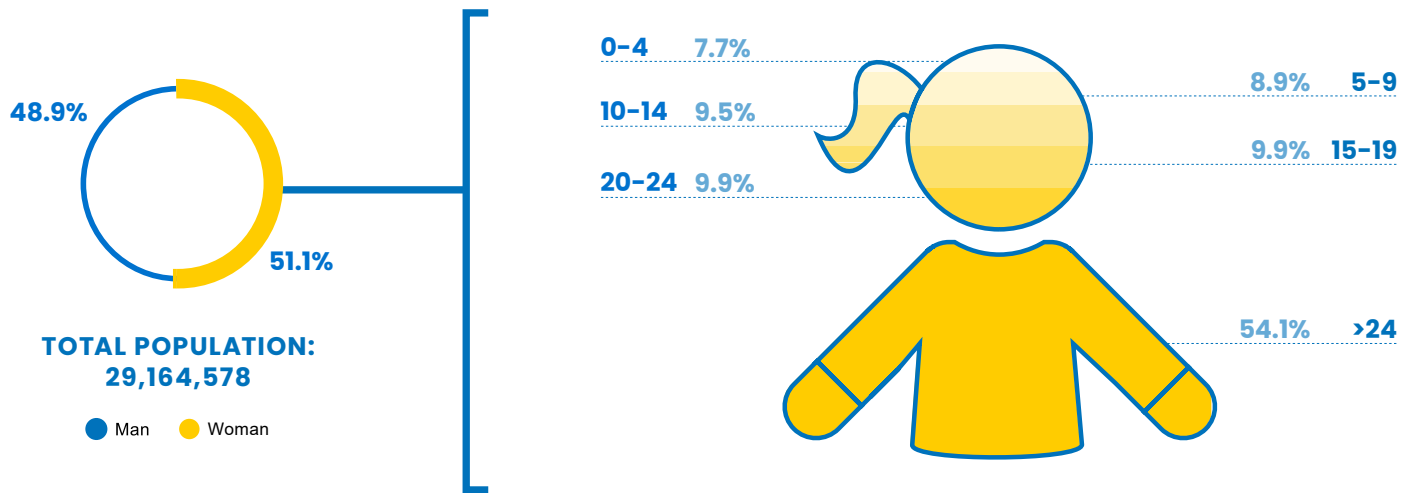


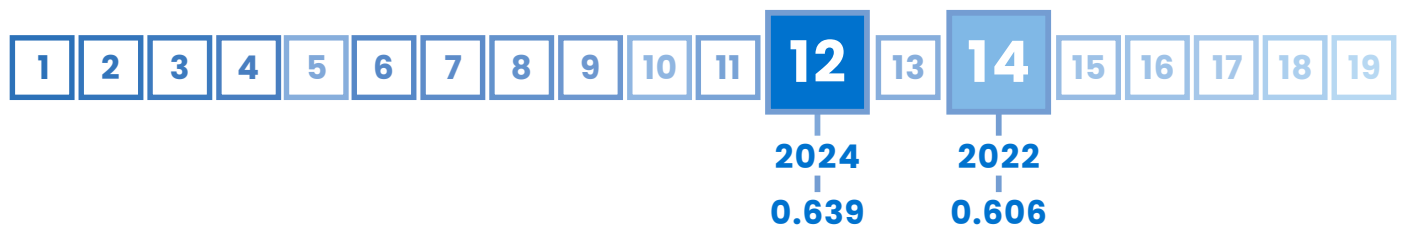
12 Nepal

GLI
INDEX
0.639

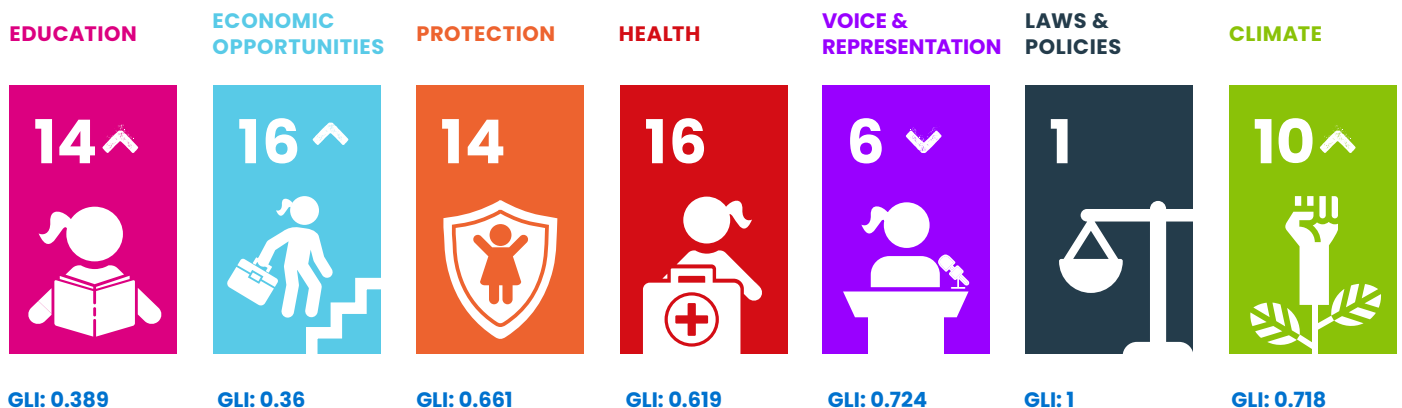
RANK
#12



NEPAL'S POSITION IN ASIA'S RANKING:



NEPAL'S PERFORMANCE PER AREA:










NEPAL'S PERFORMANCE IN OTHER INDEXES:

HDI
0.601
(Rank 146)

GDI
0.885
(Group 5)

GII
0.495

GDP/Capita
1,324

Domain	Rank	Indicator	Indicator Value	Index
 EDUCATION	1 ▼	Completion Rate, Lower Secondary Female	103.0%	1.000
	14 ▼	Gross enrolment ratio for tertiary education, Female	14.8%	0.148
	10 =	Access to Internet, Female	17.3%	0.173
	17 =	Mean years of schooling, Female	3.5 years	0.233
 ECONOMIC OPPORTUNITIES	16 ▼	Share of youth not in employment, education or training (youth NEET rate), Female	45.8%	0.542
	14 =	Youth Labour Participation Rate, Female	21.4%	0.214
	8 ▲	Account ownership at a financial institution or with a mobile-service provider, Female	49.9%	0.499
	15 =	Female share of employment in managerial positions	13.9%	0.185
 PROTECTION	15 ▲	Percentage of girls aged 5-17 years engaged in child labour	23.0%	0.540
	16 =	Percentage of women aged 20-24 who were married before age 18	35.0%	0.611
	9 =	Percentage of the female population ages 15 and older that has ever experienced physical and/or sexual violence from an intimate partner	13.4%	0.833
 HEALTH	16 =	Adolescent birth rate of woman aged 15-19	63.4 births per 1,000 women	0.683
	13 =	Proportion of women aged 15 - 19 years who have their need for family planning satisfied with modern methods	24.0	0.240
	12 ▲	Prevalence of stunting, height for age, Female	26.7% of children under 5	0.619
	9 =	Suicide Mortality Rate (15-19), Female	2.7 per 100,000 female population	0.933
 VOICE & REPRESENTATION	2 =	Proportion of seats held by women in national parliaments	33.1	0.441
	1 =	Woman's testimony carries the same evidentiary weight in court as a man's	Yes	1.000
	14 =	Proportion of girls under 5 years of age whose births have been registered with a civil authority	73.2	0.732
 LAWS & POLICIES	1 ▲	Equal rights between sons and daughters to inherit assets from parents	Yes	1.000
	1 ▼	Equal remuneration for work of equal value	Yes	1.000
	1 =	Legislation on sexual harassment in employment	Yes	1.000
	1 =	Female share of employment in managerial positions	Yes	1.000
	1 =	Legislation specifically addressing domestic violence	Yes	1.000
 CLIMATE	18 ▼	Number of deaths and missing persons attributed to disasters	23.6 per 100,000 population	0.953
	9 ▲	Number of directly affected persons attributed to disasters per 100,000 population	152.9 persons	0.994
	13 ▲	Proportion of population with primary reliance on clean fuels and technology	39.6%	0.396
	3 =	Terrestrial and marine protected areas	23.6% of total territorial area	0.236
	3 ▼	Carbon dioxide emissions, production emissions per capita	0.5 tonnes	0.983
	1 =	Countries with NDC to Paris Declaration on Climate Change (2021 updated)	Yes	1.000



Plan International's **2024 Girls' Leadership Index (GLI)** provides a unique dive into the barriers and opportunities shaping the leadership potential of adolescent girls and young women.

Based on data from 33 countries across the Asia-Pacific region, the findings paint a picture of progress punctuated by persistent inequalities, offering a sobering reminder of the work still required to break entrenched cycles of gender disparity.

Report available at:
plan-international.org/publications/2024-girls-leadership-index-report/