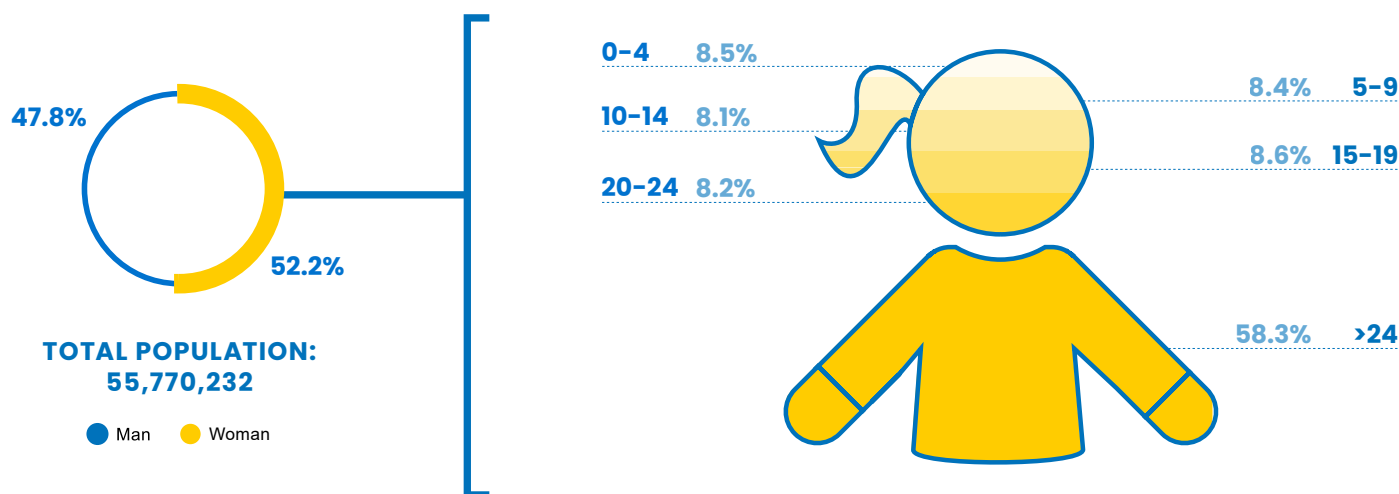


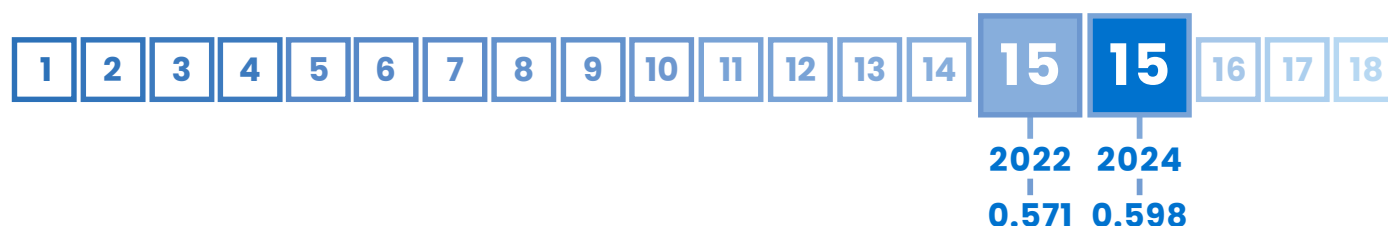
# 15 Myanmar

GLI  
INDEX  
0.598

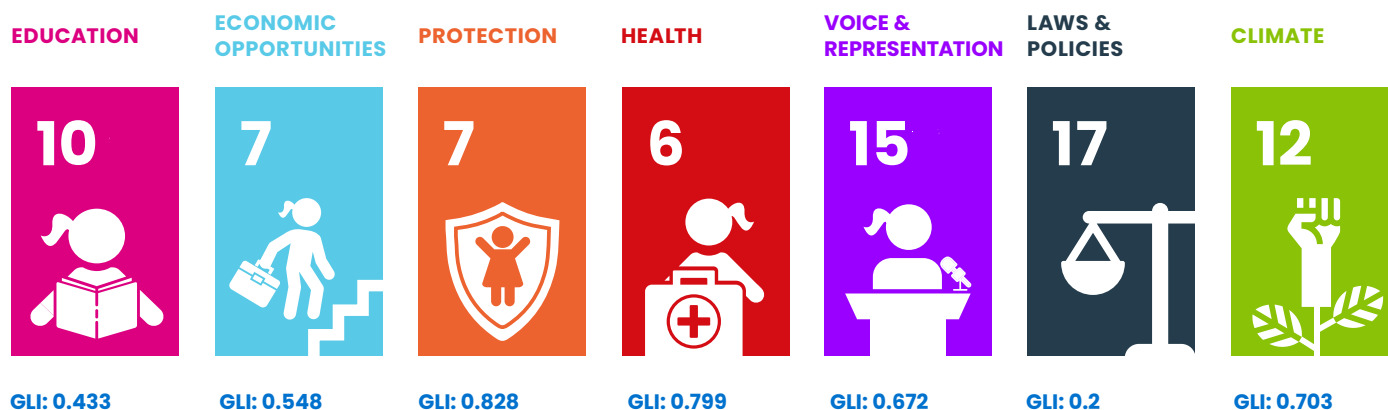
RANK  
#15



## MYANMAR'S POSITION IN ASIA'S RANKING:



## MYANMAR'S PERFORMANCE PER AREA:









## MYANMAR'S PERFORMANCE IN OTHER INDEXES:

HDI  
0.608  
(Rank 146)

GDI  
0.941  
(Group 3)

GII  
0.479

GDP/Capita  
1,188

Domain	Rank	Indicator	Indicator Value	Index
 <b>EDUCATION</b>	14 ▲	Completion Rate, Lower Secondary Female	77.4%	0.762
	11 ▲	Gross enrolment ratio for tertiary education, Female	24.4%	0.244
	5 ▲	Access to Internet, Female	31.8%	0.318
	11 ▲	Mean years of schooling, Female	6.1 years	0.407
 <b>ECONOMIC OPPORTUNITIES</b>	8 ▲	Share of youth not in employment, education or training (youth NEET rate), Female	20.7%	0.793
	5 =	Youth Labour Participation Rate, Female	39.2%	0.392
	10 =	Account ownership at a financial institution or with a mobile-service provider, Female	46.2%	0.462
	2 ▲	Female share of employment in managerial positions	41.0%	0.547
 <b>PROTECTION</b>	10 ▼	Percentage of girls aged 5-17 years engaged in child labour	10.0%	0.800
	7 =	Percentage of women aged 20-24 who were married before age 18	16.0%	0.822
	8 ▲	Percentage of the female population ages 15 and older that has ever experienced physical and/or sexual violence from an intimate partner	11.0%	0.863
 <b>HEALTH</b>	9 ▼	Adolescent birth rate of woman aged 15-19	32.8 births per 1,000 women	0.836
	5 =	Proportion of women aged 15 - 19 years who have their need for family planning satisfied with modern methods	73.0	0.730
	10 ▲	Prevalence of stunting, height for age, Female	24.1% of children under 5	0.656
	3 =	Suicide Mortality Rate (15-19), Female	1.1 per 100,000 female population	0.973
 <b>VOICE &amp; REPRESENTATION</b>	13 =	Proportion of seats held by women in national parliaments	15.3	0.204
	1 =	Woman's testimony carries the same evidentiary weight in court as a man's	Yes	1.000
	13 =	Proportion of girls under 5 years of age whose births have been registered with a civil authority	81.3	0.813
 <b>LAWS &amp; POLICIES</b>	1 =	Equal rights between sons and daughters to inherit assets from parents	Yes	1.000
	7 =	Equal remuneration for work of equal value	No	0.000
	18 =	Legislation on sexual harassment in employment	No	0.000
	8 =	Female share of employment in managerial positions	No	0.000
	16 =	Legislation specifically addressing domestic violence	No	0.000
 <b>CLIMATE</b>	9 ▼	Number of deaths and missing persons attributed to disasters	3.8 per 100,000 population	0.992
	11 ▲	Number of directly affected persons attributed to disasters per 100,000 population	263.1	0.989
	12 ▲	Proportion of population with primary reliance on clean fuels and technology	50.7%	0.507
	13 =	Terrestrial and marine protected areas	3.9% of total territorial area	0.039
	5 ▲	Carbon dioxide emissions, production emissions per capita	0.6 tonnes	0.980
	1 =	Countries with NDC to Paris Declaration on Climate Change (2021 updated)	Yes	1.000



Plan International's 2024 Girls' Leadership Index (GLI) provides a unique dive into the barriers and opportunities shaping the leadership potential of adolescent girls and young women.

Based on data from 33 countries across the Asia-Pacific region, the findings paint a picture of progress punctuated by persistent inequalities, offering a sobering reminder of the work still required to break entrenched cycles of gender disparity.

Report available at:  
[plan-international.org/publications/2024-girls-leadership-index-report/](https://plan-international.org/publications/2024-girls-leadership-index-report/)