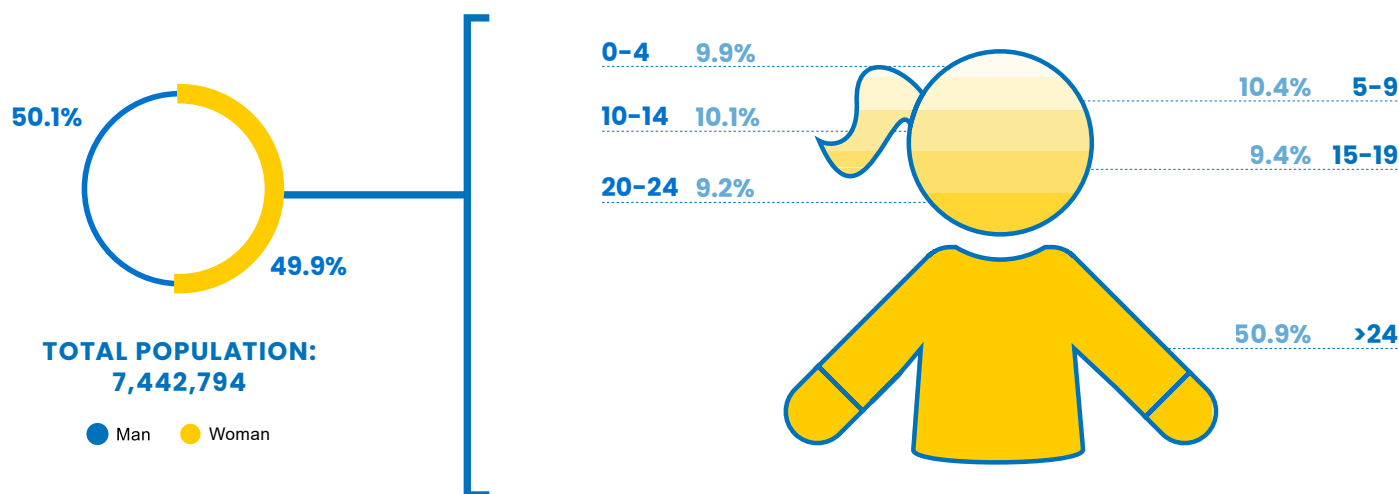


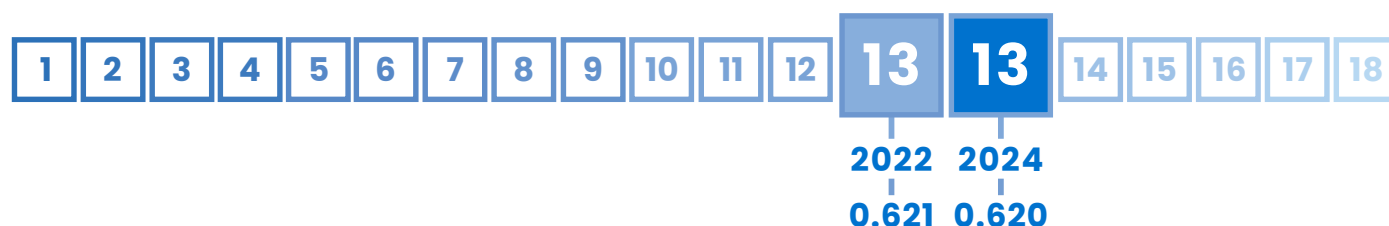
13 Laos

GLI
INDEX
0.642

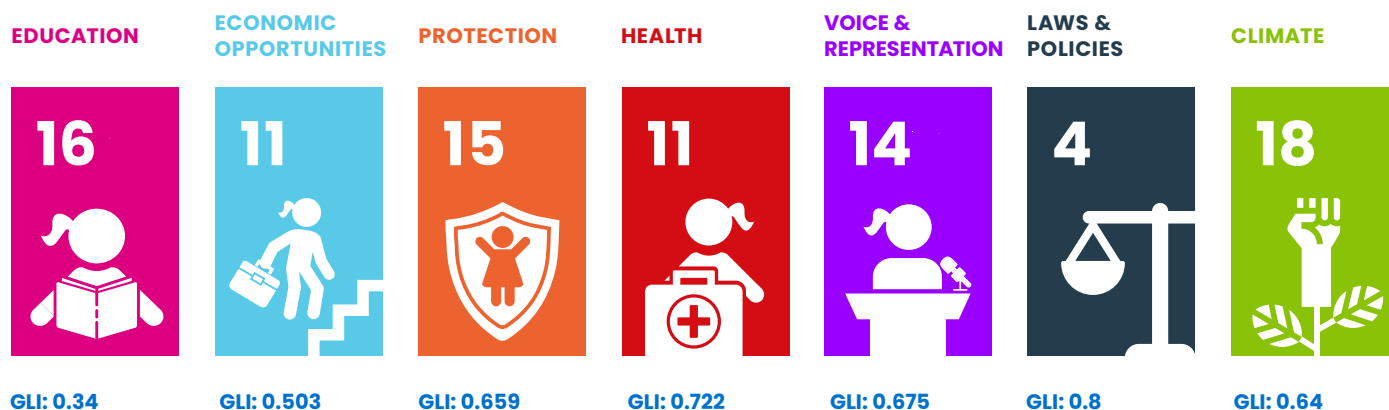
RANK
#13



LAOS' POSITION IN ASIA'S RANKING:



LAOS' PERFORMANCE PER AREA:










LAOS' PERFORMANCE IN OTHER INDEXES:

HDI
0.62
(Rank 139)

GDI
0.919
(Group 4)

GII
0.467

GDP/Capita
2,075

Domain	Rank	Indicator	Indicator Value	Index
 EDUCATION	17 ▼	Completion Rate, Lower Secondary Female	58.0%	0.558
	17 ▼	Gross enrolment ratio for tertiary education, Female	13.4%	0.134
	- -	Access to Internet, Female	-	-
	13 =	Mean years of schooling, Female	4.9 years	0.327
 ECONOMIC OPPORTUNITIES	11 ▲	Share of youth not in employment, education or training (youth NEET rate), Female	24.6%	0.754
	2 ▲	Youth Labour Participation Rate, Female	53.5%	0.535
	12 =	Account ownership at a financial institution or with a mobile-service provider, Female	37.9%	0.379
	8 ▼	Female share of employment in managerial positions	25.7%	0.343
 PROTECTION	16 ▼	Percentage of girls aged 5-17 years engaged in child labour	29.0%	0.420
	15 =	Percentage of women aged 20-24 who were married before age 18	32.7%	0.637
	6 ▲	Percentage of the female population ages 15 and older that has ever experienced physical and/or sexual violence from an intimate partner	6.4%	0.920
 HEALTH	17 ▼	Adolescent birth rate of woman aged 15-19	71.8 births per 1,000 women	0.641
	6 ▲	Proportion of women aged 15 - 19 years who have their need for family planning satisfied with modern methods	72.3	0.723
	13 ▲	Prevalence of stunting, height for age, Female	27.7% of children under 5	0.604
	13 =	Suicide Mortality Rate (15-19), Female	3.2 per 100,000 female population	0.920
 VOICE & REPRESENTATION	7 =	Proportion of seats held by women in national parliaments	22.0	0.293
	1 =	Woman's testimony carries the same evidentiary weight in court as a man's	Yes	1.000
	15 =	Proportion of girls under 5 years of age whose births have been registered with a civil authority	73.1	0.731
 LAWS & POLICIES	1 =	Equal rights between sons and daughters to inherit assets from parents	Yes	1.000
	7 =	Equal remuneration for work of equal value	No	0.000
	1 =	Legislation on sexual harassment in employment	Yes	1.000
	1 =	Female share of employment in managerial positions	Yes	1.000
	1 =	Legislation specifically addressing domestic violence	Yes	1.000
 CLIMATE	3 ▼	Number of deaths and missing persons attributed to disasters	0.8 per 100,000 population	0.998
	1 -	Number of directly affected persons attributed to disasters per 100,000 population	-	-
	18 ▲	Proportion of population with primary reliance on clean fuels and technology	10.2%	0.102
	4 =	Terrestrial and marine protected areas	18.7% of total territorial area	0.187
	13 ▼	Carbon dioxide emissions, production emissions per capita	2.6 tonnes	0.913
	1 =	Countries with NDC to Paris Declaration on Climate Change (2021 updated)	Yes	1.000



Plan International's 2024 Girls' Leadership Index (GLI) provides a unique dive into the barriers and opportunities shaping the leadership potential of adolescent girls and young women.

Based on data from 33 countries across the Asia-Pacific region, the findings paint a picture of progress punctuated by persistent inequalities, offering a sobering reminder of the work still required to break entrenched cycles of gender disparity.

Report available at:
plan-international.org/publications/2024-girls-leadership-index-report/