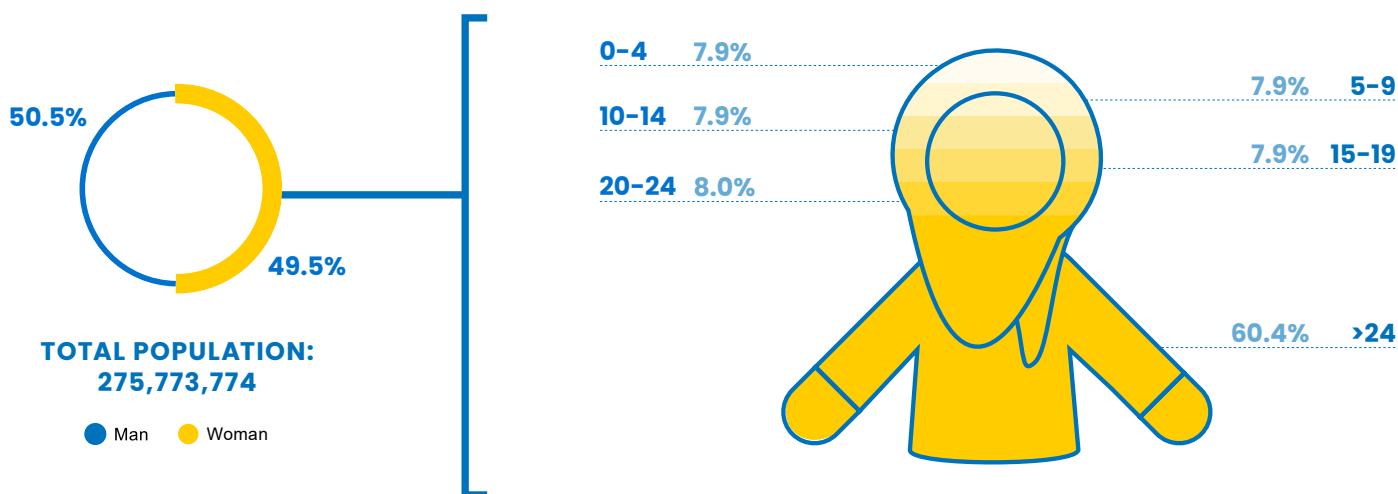


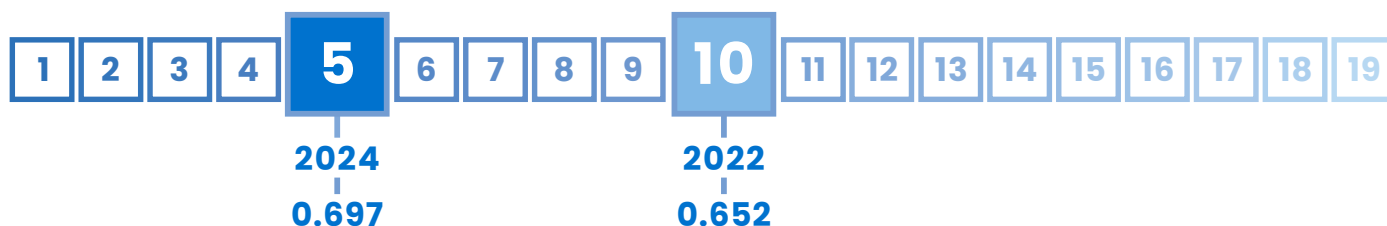
5 Indonesia

GLI
INDEX
0.697

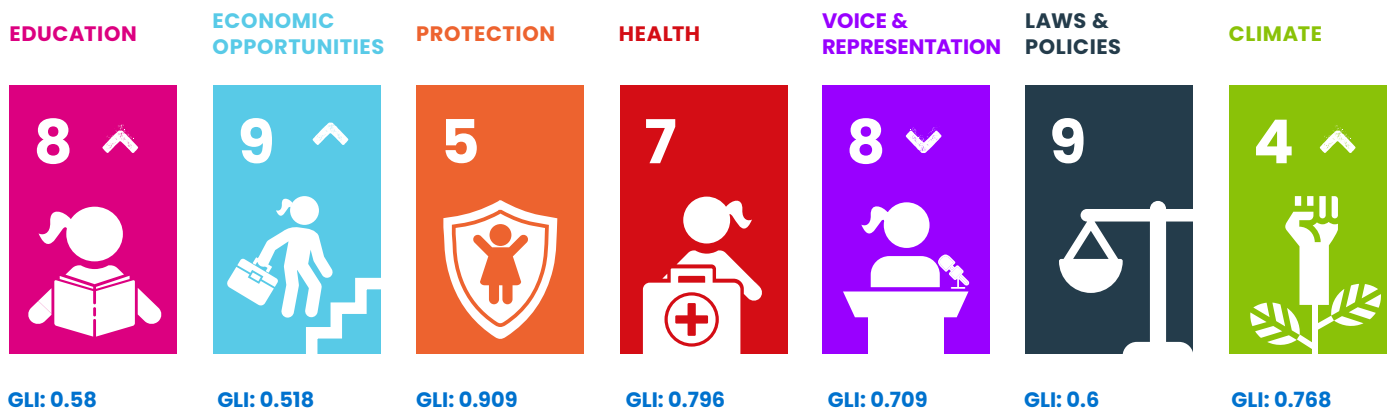
RANK
#5



INDONESIA'S POSITION IN ASIA'S RANKING:



INDONESIA'S PERFORMANCE PER AREA:










INDONESIA'S PERFORMANCE IN OTHER INDEXES:

HDI
0.713
(Rank 112)

GDI
0.940
(Group 3)

GII
0.439

GDP/Capita
4,941

Domain	Rank	Indicator	Indicator Value	Index
 EDUCATION	1 ▼	Completion Rate, Lower Secondary Female	101.9%	1.000
	4 ▼	Gross enrolment ratio for tertiary education, Female	47.0%	0.470
	6 =	Access to Internet, Female	30.5%	0.305
	8 =	Mean years of schooling, Female	8.2 years	0.547
 ECONOMIC OPPORTUNITIES	10 ▼	Share of youth not in employment, education or training (youth NEET rate), Female	26.3%	0.737
	6 =	Youth Labour Participation Rate, Female	37.9%	0.379
	7 ▲	Account ownership at a financial institution or with a mobile-service provider, Female	52.3%	0.523
	6 =	Female share of employment in managerial positions	32.4%	0.432
 PROTECTION	7 ▲	Percentage of girls aged 5-17 years engaged in child labour	4.6%	0.908
	8 =	Percentage of women aged 20-24 who were married before age 18	16.3%	0.819
	1 =	Percentage of the female population ages 15 and older that has ever experienced physical and/or sexual violence from an intimate partner	...%	1.000
 HEALTH	10 =	Adolescent birth rate of woman aged 15-19	32.9 births per 1,000 women	0.836
	2 =	Proportion of women aged 15 - 19 years who have their need for family planning satisfied with modern methods	81.7	0.817
	15 ▲	Prevalence of stunting, height for age, Female	31.0% of children under 5	0.557
	3 =	Suicide Mortality Rate (15-19), Female	1.1 per 100,000 female population	0.973
 VOICE & REPRESENTATION	8 =	Proportion of seats held by women in national parliaments	21.9	0.292
	1 =	Woman's testimony carries the same evidentiary weight in court as a man's	Yes	1.000
	12 =	Proportion of girls under 5 years of age whose births have been registered with a civil authority	83.4	0.834
 LAWS & POLICIES	13 ▲	Equal rights between sons and daughters to inherit assets from parents	No	0.000
	7 ▼	Equal remuneration for work of equal value	No	0.000
	1 =	Legislation on sexual harassment in employment	Yes	1.000
	1 =	Female share of employment in managerial positions	Yes	1.000
	1 =	Legislation specifically addressing domestic violence	Yes	1.000
 CLIMATE	12 ▼	Number of deaths and missing persons attributed to disasters	5.3 per 100,000 population	0.989
	15 ▲	Number of directly affected persons attributed to disasters per 100,000 population	1544.4 persons	0.938
	4 ▲	Proportion of population with primary reliance on clean fuels and technology	89.1%	0.891
	9 =	Terrestrial and marine protected areas	5.3% of total territorial area	0.053
	12 ▼	Carbon dioxide emissions, production emissions per capita	2.1 tonnes	0.930
	1 =	Countries with NDC to Paris Declaration on Climate Change (2021 updated)	Yes	1.000



Plan International's 2024 Girls' Leadership Index (GLI) provides a unique dive into the barriers and opportunities shaping the leadership potential of adolescent girls and young women.

Based on data from 33 countries across the Asia-Pacific region, the findings paint a picture of progress punctuated by persistent inequalities, offering a sobering reminder of the work still required to break entrenched cycles of gender disparity.

Report available at:
plan-international.org/publications/2024-girls-leadership-index-report/