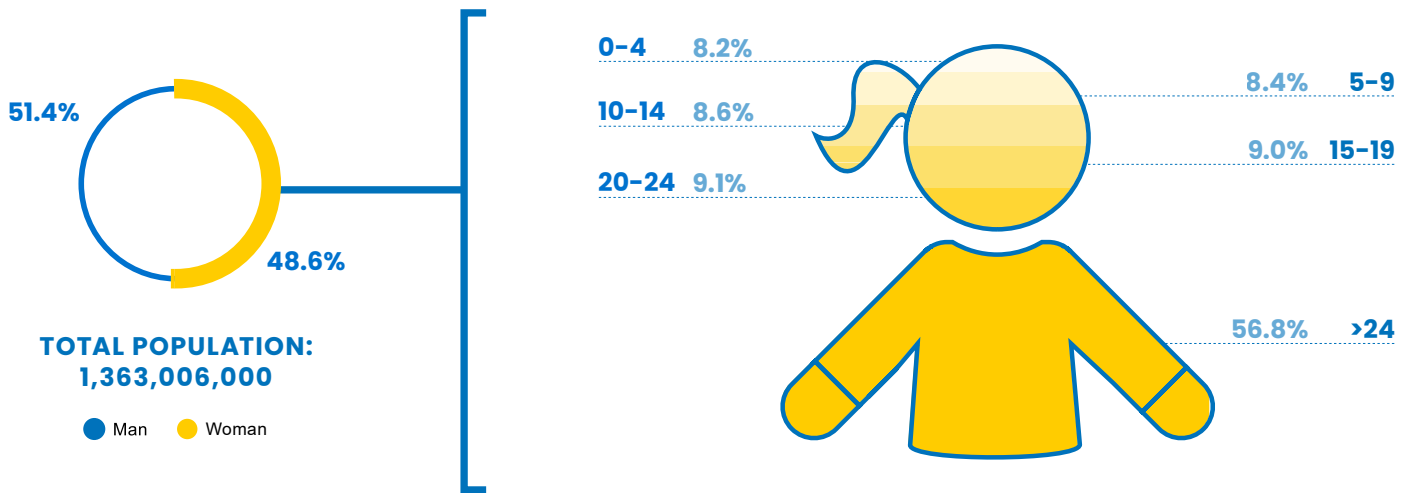


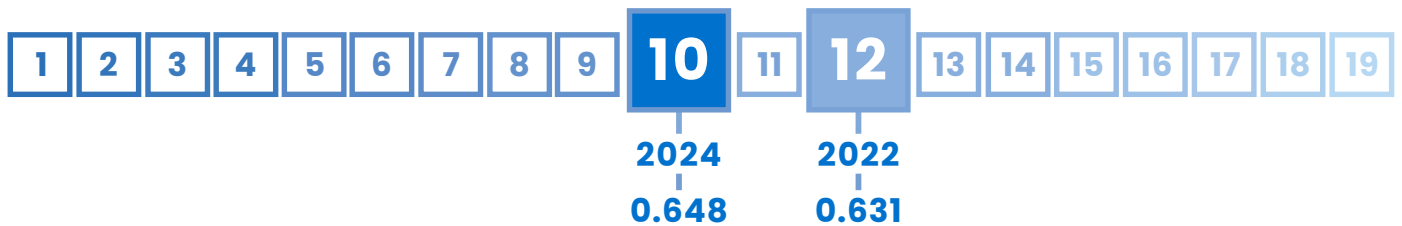
10 India

GLI
INDEX
0.642

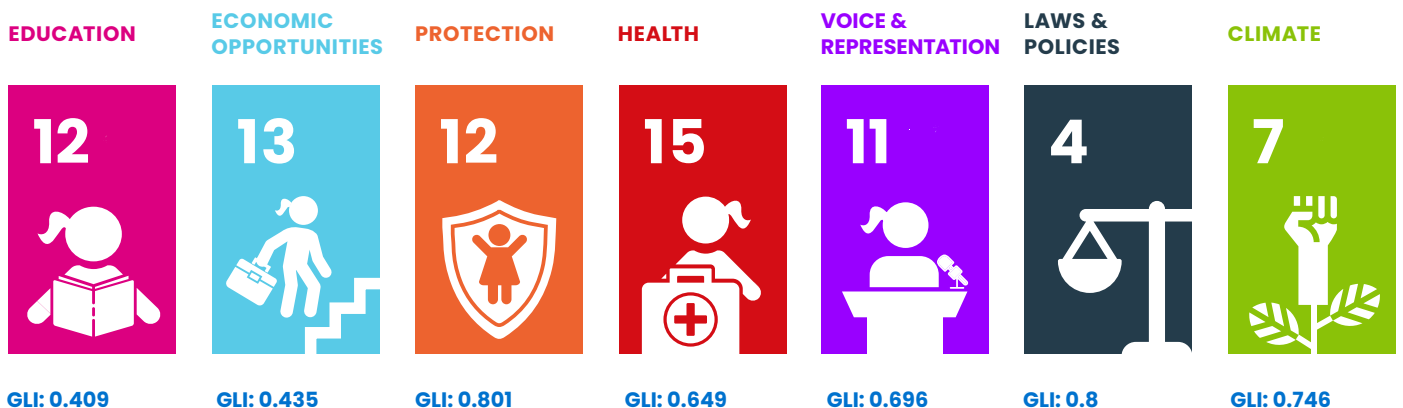
RANK
#10



INDIA'S POSITION IN ASIA'S RANKING:



INDIA'S PERFORMANCE PER AREA:










INDIA'S PERFORMANCE IN OTHER INDEXES:

HDI
0.644
(Rank134)

GDI
0.852
(Group 5)

GII
0.437

GDP/Capita
2,485

| Domain | Rank | Indicator | Indicator Value | Index |
|--|------|--|------------------------------------|-------|
|  EDUCATION | 12 ▼ | Completion Rate, Lower Secondary Female | 86.5% | 0.858 |
| | 9 ▲ | Gross enrolment ratio for tertiary education, Female | 32.8% | 0.328 |
| | 12 ▼ | Access to Internet, Female | 8.4% | 0.084 |
| | 12 ▲ | Mean years of schooling, Female | 5.5 years | 0.367 |
|  ECONOMIC OPPORTUNITIES | 17 ▼ | Share of youth not in employment, education or training (youth NEET rate), Female | 38.1% | 0.619 |
| | 19 ▲ | Youth Labour Participation Rate, Female | 17.5% | 0.175 |
| | 5 = | Account ownership at a financial institution or with a mobile-service provider, Female | 77.6% | 0.776 |
| | 16 ▼ | Female share of employment in managerial positions | 12.7% | 0.169 |
|  PROTECTION | 4 = | Percentage of girls aged 5-17 years engaged in child labour | 3.1% | 0.938 |
| | 12 ▲ | Percentage of women aged 20-24 who were married before age 18 | 23.3% | 0.741 |
| | 11 ▲ | Percentage of the female population ages 15 and older that has ever experienced physical and/or sexual violence from an intimate partner | 22.0% | 0.725 |
|  HEALTH | 6 ▼ | Adolescent birth rate of woman aged 15-19 | 16.3 births per 1,000 women | 0.919 |
| | 11 = | Proportion of women aged 15 - 19 years who have their need for family planning satisfied with modern methods | 40.8 | 0.408 |
| | 16 ▲ | Prevalence of stunting, height for age, Female | 31.7% of children under 5 | 0.547 |
| | 19 = | Suicide Mortality Rate (15-19), Female | 11.1 per 100,000 female population | 0.723 |
|  VOICE & REPRESENTATION | 14 ▲ | Proportion of seats held by women in national parliaments | 14.7 | 0.196 |
| | 1 = | Woman's testimony carries the same evidentiary weight in court as a man's | Yes | 1.000 |
| | 11 ▲ | Proportion of girls under 5 years of age whose births have been registered with a civil authority | 89.1 | 0.891 |
|  LAWS & POLICIES | 1 = | Equal rights between sons and daughters to inherit assets from parents | Yes | 1.000 |
| | 7 = | Equal remuneration for work of equal value | No | 0.000 |
| | 1 = | Legislation on sexual harassment in employment | Yes | 1.000 |
| | 1 = | Female share of employment in managerial positions | Yes | 1.000 |
| | 1 = | Legislation specifically addressing domestic violence | Yes | 1.000 |
|  CLIMATE | 8 ▼ | Number of deaths and missing persons attributed to disasters | 3.5 per 100,000 population | 0.993 |
| | 6 ▲ | Number of directly affected persons attributed to disasters per 100,000 population | 29.1 persons | 0.999 |
| | 8 ▲ | Proportion of population with primary reliance on clean fuels and technology | 74.5% | 0.745 |
| | 12 = | Terrestrial and marine protected areas | 4.4% of total territorial area | 0.044 |
| | 11 ▲ | Carbon dioxide emissions, production emissions per capita | 1.6 tonnes | 0.947 |
| | 1 = | Countries with NDC to Paris Declaration on Climate Change (2021 updated) | Yes | 1.000 |



Plan International's 2024 Girls' Leadership Index (GLI) provides a unique dive into the barriers and opportunities shaping the leadership potential of adolescent girls and young women.

Based on data from 33 countries across the Asia-Pacific region, the findings paint a picture of progress punctuated by persistent inequalities, offering a sobering reminder of the work still required to break entrenched cycles of gender disparity.

Report available at:
plan-international.org/publications/2024-girls-leadership-index-report/