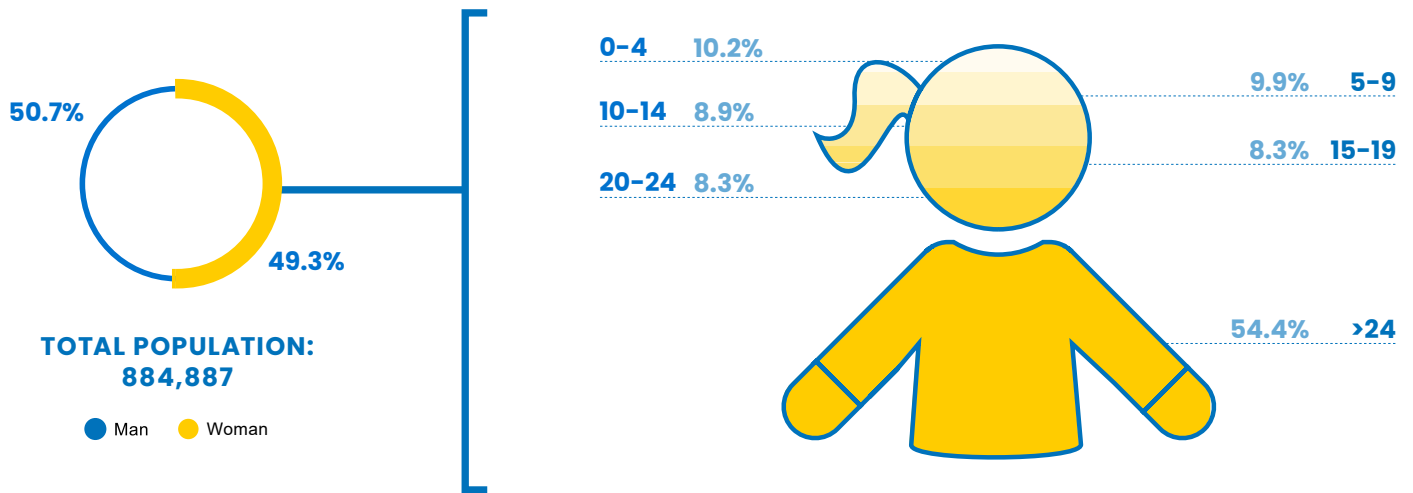


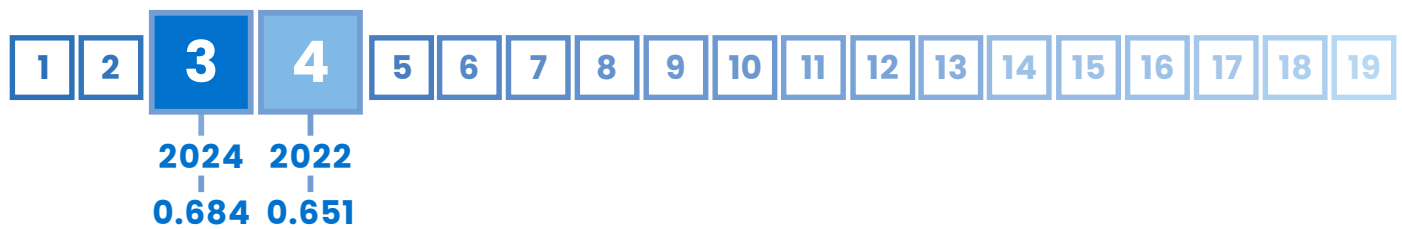
3 Fiji

GLI
INDEX
0.684

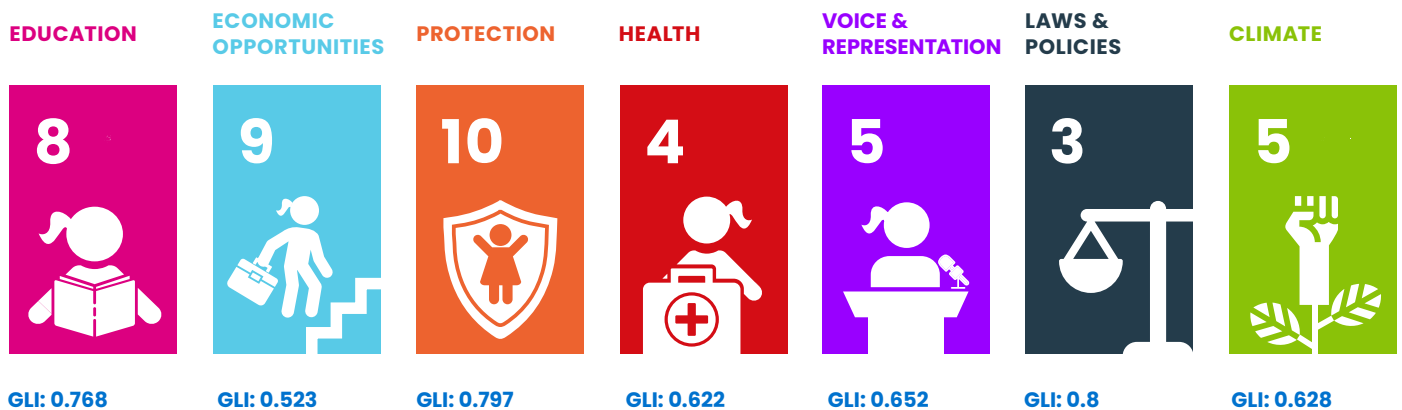
RANK
#3



FIJI'S POSITION IN ASIA'S RANKING:



FIJI'S PERFORMANCE PER AREA:










FIJI'S PERFORMANCE IN OTHER INDEXES:

HDI
0.729
(Rank 104)

GDI
0.940
(Group 3)

GII
0.332

GDP/Capita
5,868

Domain	Rank Indicator	Indicator Value	Index	
 EDUCATION	5 =	Gross enrolment ratio, primary, female	105.5%	1.000
	11 ▼	Gross enrolment ratio, secondary, female	80.6%	0.806
	10 ▼	Out-of-school rate for youth of upper secondary school age, female	26.9%	0.732
	9 =	Expected years of schooling, female	11.4 years	0.533
 ECONOMIC OPPORTUNITIES	5 ▼	Share of youth (15-24) not in employment, education or training, Female	29.6%	0.704
	5 =	Female share of employment in senior and middle management	28.6%	0.611
	5 =	Law mandates equal remuneration for work of equal value	No	0.000
	10 ▲	Female youth unemployment (15-24 years)	22.4%	0.776
 PROTECTION	10 ▲	Percentage of the female population ages 15 and older that has ever experienced physical and/or sexual violence from an intimate partner	29.7%	0.703
	10 ▼	Percentage of the female population ages 15 and older that has ever experienced sexual violence from a nonintimate partner	23.3%	0.767
	7 ▲	Proportion of women aged 20-24 years who were married or in a union before age 18	4.0%	0.920
 HEALTH	3 ▲	Adolescent birth rate	26.1 births per 1,000 women ages 15-19	0.791
	4 =	Suicide Mortality Rate, female 15-19	5.7 per 100,000 female population	0.772
	3 ▼	Maternal mortality ratio	38 per 100,000 live births	0.747
	6	Modern contraception prevalence rate (15-19 years)	14.4%	0.180
 VOICE & REPRESENTATION	7 ▼	Proportion of seats held by women in national parliaments	9.1	0.091
	1 =	A woman can apply for a passport in the same way as a man	Yes	1.000
	7	Proportion of girls under 5 years of age whose births have been registered with a civil authority	86.6	0.866
 LAWS & POLICIES	1 =	Equal rights between sons and daughters to inherit assets from parents	Yes	1.000
	1 ▲	Legislation establish clear criminal penalties for domestic violence	Yes	1.000
	1 =	Legislation on sexual harrassment in employment	Yes	1.000
	1 =	Laws prohibiting or invalidating child marriage	Yes	1.000
	5 =	Laws prohibiting discrimination in access to credit based on gender	No	0.000
 CLIMATE	9 ▼	Number of deaths and missing persons attributed to disasters	19.8 per 100,000 population	0.960
	3 ▲	Number of directly affected persons attributed to disasters per 100,000 population	192.2 persons	0.995
	7 ▲	Proportion of population with primary reliance on clean fuels and technology	56.1%	0.561
	5 =	Terrestrial and marine protected areas	1% of total territorial area	0.010
	8 ▲	CO2 emissions	1.1 tonnes	0.963



Plan International's **2024 Girls' Leadership Index (GLI)** provides a unique dive into the barriers and opportunities shaping the leadership potential of adolescent girls and young women.

Based on data from 33 countries across the Asia-Pacific region, the findings paint a picture of progress punctuated by persistent inequalities, offering a sobering reminder of the work still required to break entrenched cycles of gender disparity.

Report available at:
plan-international.org/publications/2024-girls-leadership-index-report/