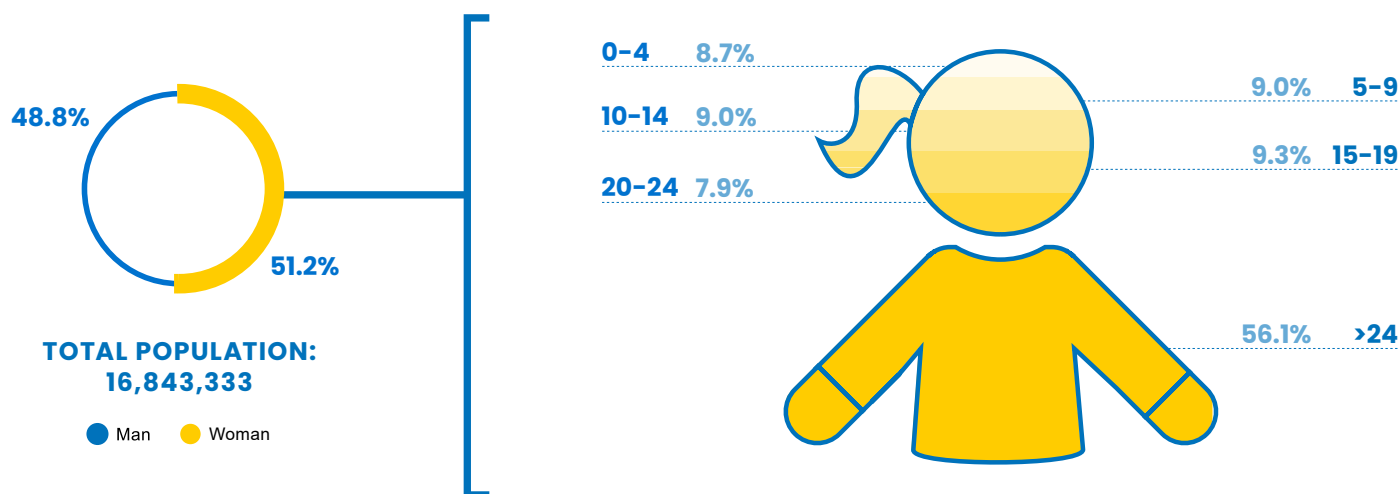


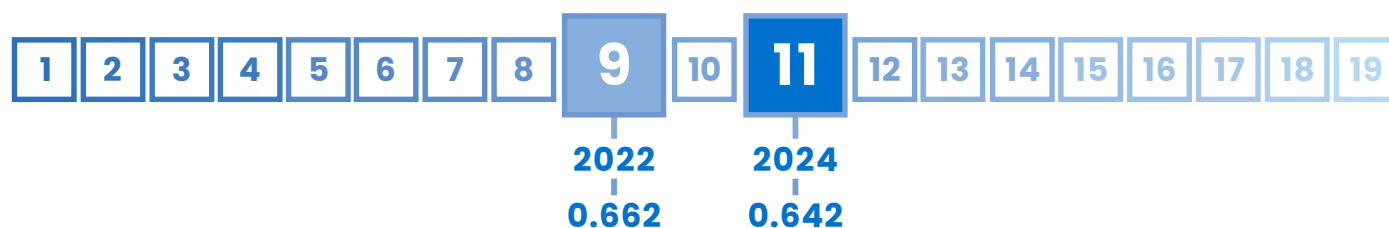
# 11 Cambodia

GLI  
INDEX  
0.642

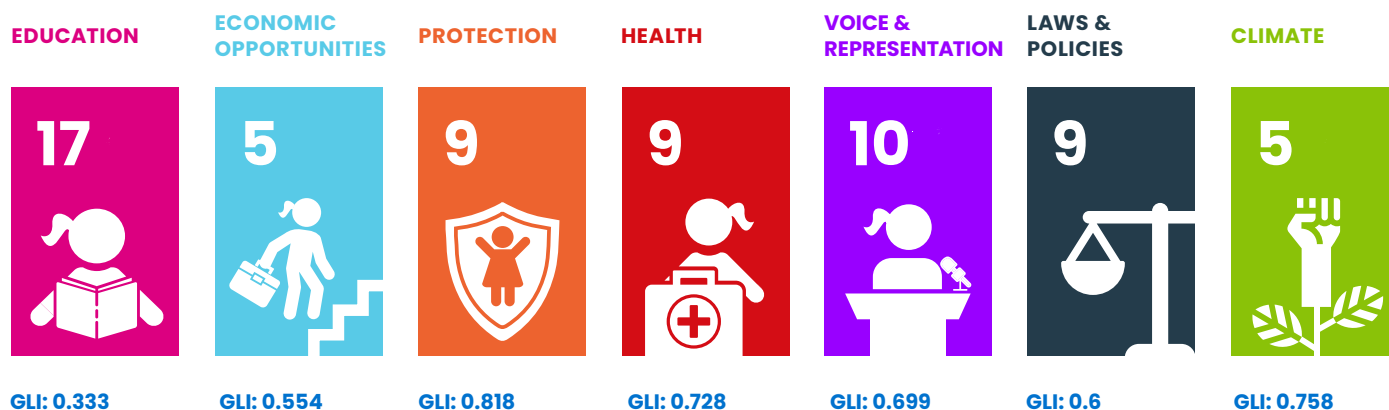
RANK  
#11



## CAMBODIA'S POSITION IN ASIA'S RANKING:










## CAMBODIA'S PERFORMANCE PER AREA:



## CAMBODIA'S PERFORMANCE IN OTHER INDEXES:



Domain	Rank	Indicator	Indicator Value	Index
 <b>EDUCATION</b>	15 ▲	Completion Rate, Lower Secondary Female	67.5%	0.658
	16 ▼	Gross enrolment ratio for tertiary education, Female	14.1%	0.141
	8 ▼	Access to Internet, Female	23.9%	0.239
	14 ▲	Mean years of schooling, Female	4.4 years	0.293
 <b>ECONOMIC OPPORTUNITIES</b>	2 ▲	Share of youth not in employment, education or training (youth NEET rate), Female	8.1%	0.919
	1 ▼	Youth Labour Participation Rate, Female	64.6%	0.646
	13 =	Account ownership at a financial institution or with a mobile-service provider, Female	32.5%	0.325
	10 ▼	Female share of employment in managerial positions	24.6%	0.328
 <b>PROTECTION</b>	13 ▼	Percentage of girls aged 5-17 years engaged in child labour	14.0%	0.720
	10 ▲	Percentage of women aged 20-24 who were married before age 18	17.9%	0.801
	3 ▲	Percentage of the female population ages 15 and older that has ever experienced physical and/or sexual violence from an intimate partner	5.4%	0.933
 <b>HEALTH</b>	14 ▲	Adolescent birth rate of woman aged 15-19	45.7 births per 1,000 women	0.772
	8 ▲	Proportion of women aged 15 - 19 years who have their need for family planning satisfied with modern methods	53.0	0.530
	8 ▲	Prevalence of stunting, height for age, Female	22.3% of children under 5	0.681
	11 =	Suicide Mortality Rate (15-19), Female	2.8 per 100,000 female population	0.930
 <b>VOICE &amp; REPRESENTATION</b>	15 =	Proportion of seats held by women in national parliaments	13.6	0.181
	1 =	Woman's testimony carries the same evidentiary weight in court as a man's	Yes	1.000
	10 =	Proportion of girls under 5 years of age whose births have been registered with a civil authority	91.7	0.917
 <b>LAWS &amp; POLICIES</b>	1 =	Equal rights between sons and daughters to inherit assets from parents	Yes	1.000
	7 =	Equal remuneration for work of equal value	No	0.000
	1 =	Legislation on sexual harassment in employment	Yes	1.000
	8 ▼	Female share of employment in managerial positions	No	0.000
	1 =	Legislation specifically addressing domestic violence	Yes	1.000
 <b>CLIMATE</b>	17 ▼	Number of deaths and missing persons attributed to disasters	20.6 per 100,000 population	0.959
	10 ▼	Number of directly affected persons attributed to disasters per 100,000 population	250 persons	0.990
	10 ▲	Proportion of population with primary reliance on clean fuels and technology	53.5%	0.535
	2 =	Terrestrial and marine protected areas	31.8% of total territorial area	0.318
	8 ▼	Carbon dioxide emissions, production emissions per capita	1.1 tonnes	0.963
	1 =	Countries with NDC to Paris Declaration on Climate Change (2021 updated)	Yes	1.000



Plan International's 2024 Girls' Leadership Index (GLI) provides a unique dive into the barriers and opportunities shaping the leadership potential of adolescent girls and young women.

Based on data from 33 countries across the Asia-Pacific region, the findings paint a picture of progress punctuated by persistent inequalities, offering a sobering reminder of the work still required to break entrenched cycles of gender disparity.

Report available at:  
[plan-international.org/publications/2024-girls-leadership-index-report/](https://plan-international.org/publications/2024-girls-leadership-index-report/)