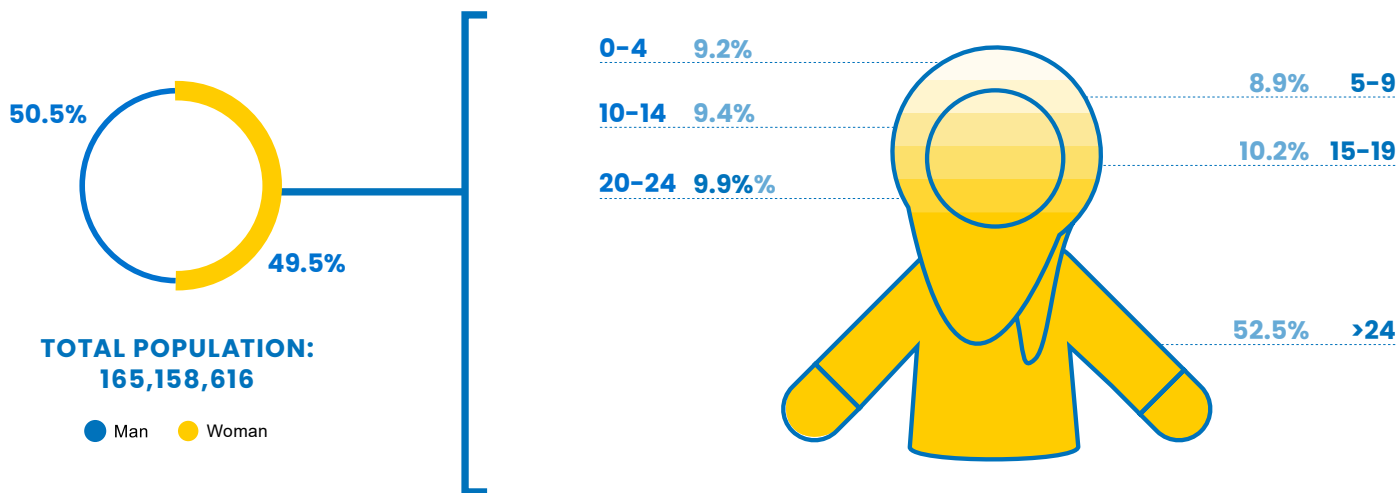


# 16 Bangladesh

GLI  
INDEX  
0.54

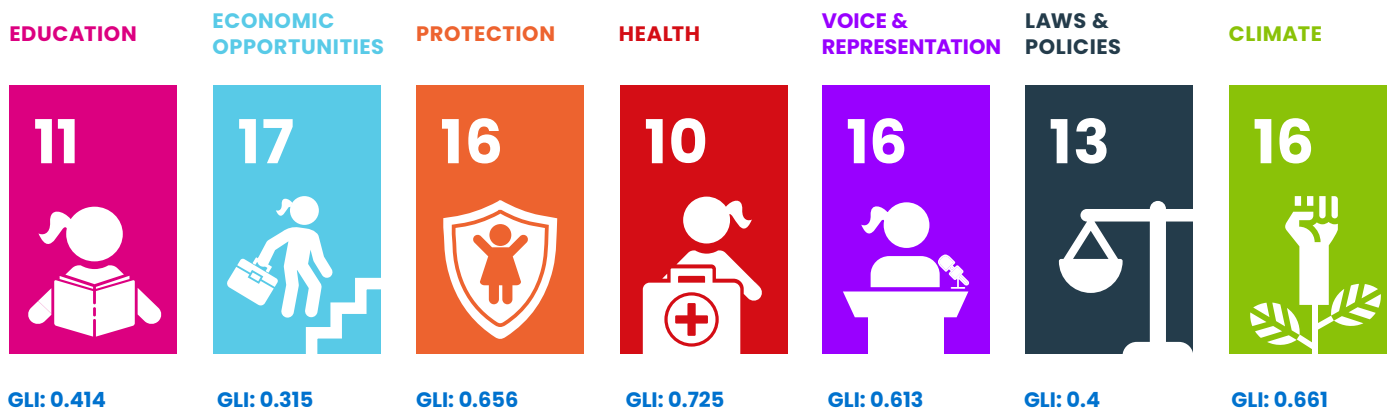
RANK  
#16



## BANGLADESH'S POSITION IN ASIA'S RANKING:



## BANGLADESH'S PERFORMANCE PER AREA:










## BANGLADESH'S PERFORMANCE IN OTHER INDEXES:

HDI  
0.67  
(Rank 129)

GDI  
0.914  
(Group 4)

GII  
0.498

GDP/Capita  
2,529

Domain	Rank	Indicator	Indicator Value	Index
 <b>EDUCATION</b>	11 ▲	Completion Rate, Lower Secondary Female	91.3%	0.908
	12 ▲	Gross enrolment ratio for tertiary education, Female	20.8%	0.208
	11 ▼	Access to Internet, Female	12.6%	0.126
	10 ▲	Mean years of schooling, Female	6.2 years	0.413
 <b>ECONOMIC OPPORTUNITIES</b>	15 ▲	Share of youth not in employment, education or training (youth NEET rate), Female	47.8%	0.522
	17 ▼	Youth Labour Participation Rate, Female	18.3%	0.183
	11 =	Account ownership at a financial institution or with a mobile-service provider, Female	43.5%	0.435
	17 ▼	Female share of employment in managerial positions	8.9%	0.119
 <b>PROTECTION</b>	8 ▲	Percentage of girls aged 5-17 years engaged in child labour	5.0%	0.900
	17 =	Percentage of women aged 20-24 who were married before age 18	51.4%	0.429
	12 ▼	Percentage of the female population ages 15 and older that has ever experienced physical and/or sexual violence from an intimate partner	28.8%	0.640
 <b>HEALTH</b>	18 ▼	Adolescent birth rate of woman aged 15-19	73.3 births per 1,000 women	0.634
	7 =	Proportion of women aged 15 - 19 years who have their need for family planning satisfied with modern methods	67.9	0.679
	11 ▼	Prevalence of stunting, height for age, Female	26.4% of children under 5	0.623
	6 =	Suicide Mortality Rate (15-19), Female	1.7 per 100,000 female population	0.958
 <b>VOICE &amp; REPRESENTATION</b>	9 =	Proportion of seats held by women in national parliaments	20.9	0.279
	1 =	Woman's testimony carries the same evidentiary weight in court as a man's	Yes	1.000
	17 =	Proportion of girls under 5 years of age whose births have been registered with a civil authority	56.1	0.561
 <b>LAWS &amp; POLICIES</b>	13 =	Equal rights between sons and daughters to inherit assets from parents	No	0.000
	7 =	Equal remuneration for work of equal value	No	0.000
	1 =	Legislation on sexual harassment in employment	Yes	1.000
	8 =	Female share of employment in managerial positions	No	0.000
	1 =	Legislation specifically addressing domestic violence	Yes	1.000
 <b>CLIMATE</b>	10 ▲	Number of deaths and missing persons attributed to disasters	4.9 per 100,000 population	0.990
	2 ▼	Number of directly affected persons attributed to disasters per 100,000 population	0.1 persons	1.000
	16 ▲	Proportion of population with primary reliance on clean fuels and technology	28.0%	0.280
	11 =	Terrestrial and marine protected areas	4.9% of total territorial area	0.049
	3 ▼	Carbon dioxide emissions, production emissions per capita	0.5 tonnes	0.983
	1 =	Countries with NDC to Paris Declaration on Climate Change (2021 updated)	Yes	1.000



Plan International's 2024 Girls' Leadership Index (GLI) provides a unique dive into the barriers and opportunities shaping the leadership potential of adolescent girls and young women.

Based on data from 33 countries across the Asia-Pacific region, the findings paint a picture of progress punctuated by persistent inequalities, offering a sobering reminder of the work still required to break entrenched cycles of gender disparity.

Report available at:  
[plan-international.org/publications/2024-girls-leadership-index-report/](https://plan-international.org/publications/2024-girls-leadership-index-report/)