

PLAN INTERNATIONAL ASIA - PACIFIC HUB

EMERGENCY RESPONSE AND EARLY RECOVERY FUND (EREF)

1 OCTOBER 2017 - 30 SEPTEMBER 2021



HUMANITARIAN SITUATION

Asia-Pacific is the most disaster-prone region in the world. Nearly 45% of the world's natural disasters occur in the area. More than 75% of those affected by natural disasters globally live in the region.

Source : (1) UNFPA, 2018 and (2) UN Secretary-General Antonio Guterres' message to the Asian Ministerial Conference on Disaster Risk Reduction, 2018.

EMERGENCY RESPONSE AND EARLY RECOVERY FUND (EREF)

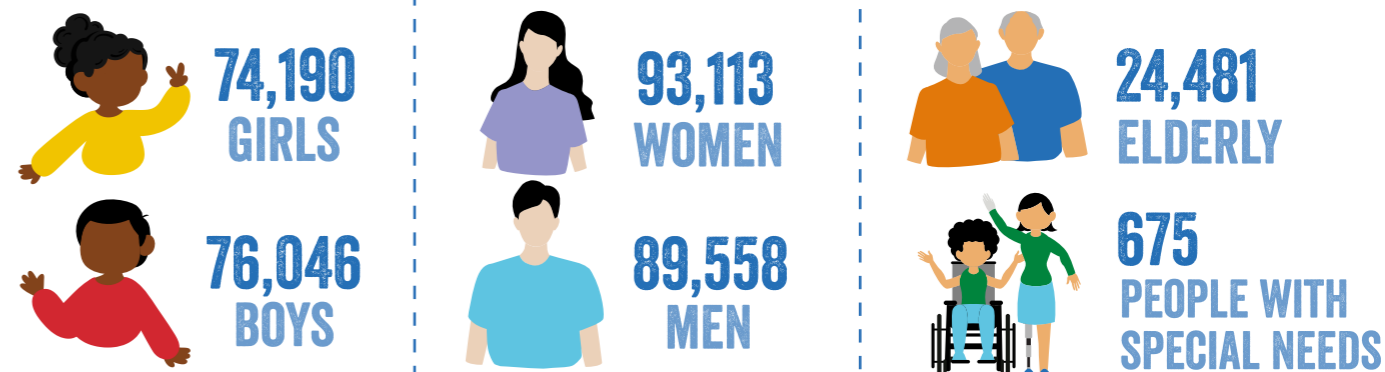
Plan International Asia – Pacific Hub established the EREF through the Inclusive Community Disaster Risk Reduction and Management (ICDRM) project funded by Margaret A. Cargill Philanthropies through Plan International U.S. National Office. From September 2017 to September 2021, the EREF supported 14 Plan Country Offices in the region to:

- 1 Respond to small scale, under-reported and underfunded disasters caused by natural hazards.
- 2 Transition from relief to early recovery through Education in Emergencies, Child Protection in Emergencies; restoration of livelihoods; rehabilitation of more resilient facilities; and capacity building on disaster risk reduction (DRR) and mainstreaming DRR and pathways to resilience in the framework for relief and recovery efforts.

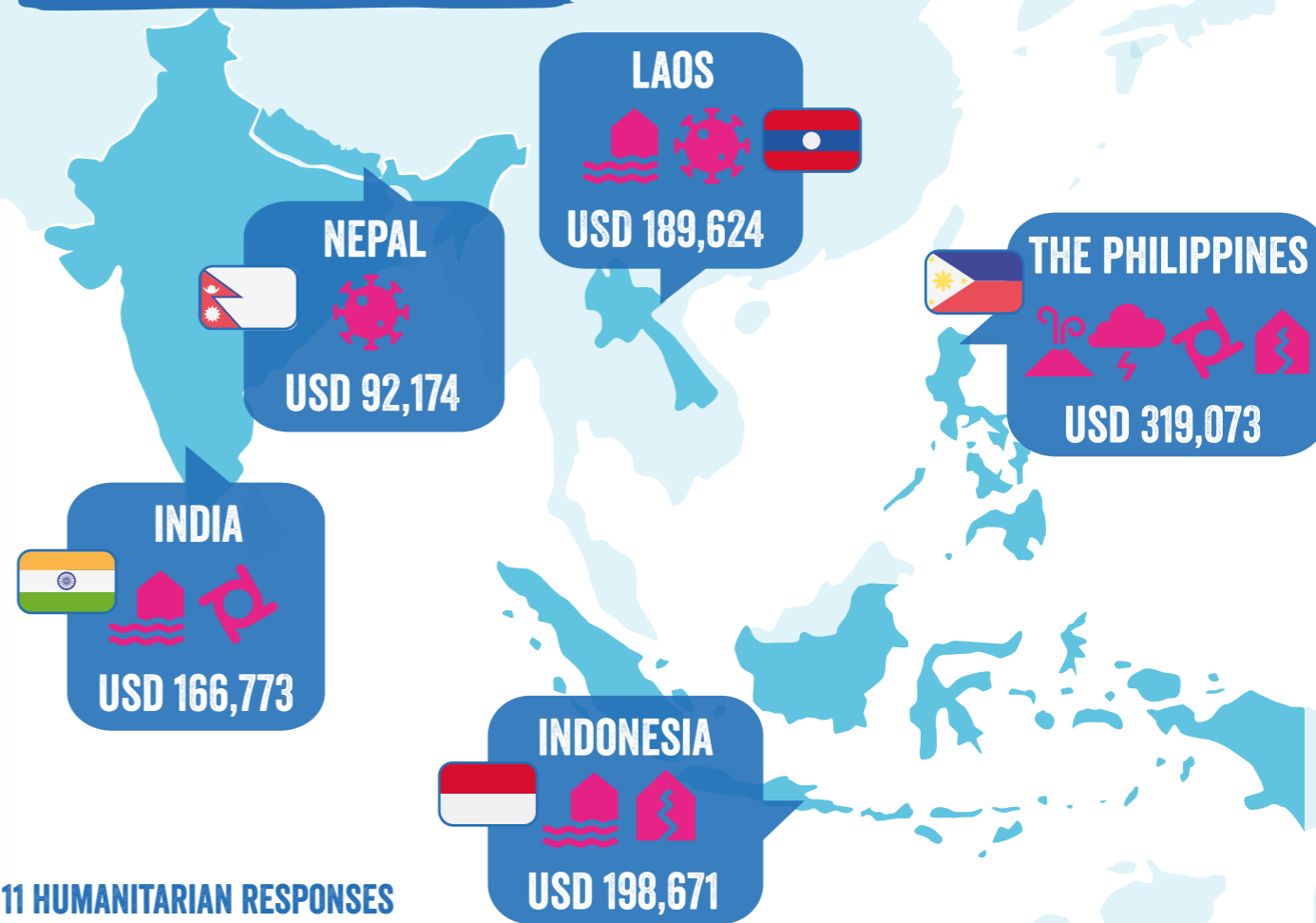
Sectors of response:

- Water, sanitation and hygiene
- NFI Non-food items
- Education in Emergencies
- Child Protection in Emergencies
- Emergency shelters
- Food Security
- Health
- Cash in emergencies
- Psychosocial support

358,063 PEOPLE REACHED FROM TOTAL DISBURSEMENT OF USD 966,315



DISASTERS AND INTERVENTIONS



11 HUMANITARIAN RESPONSES
5 COUNTRIES