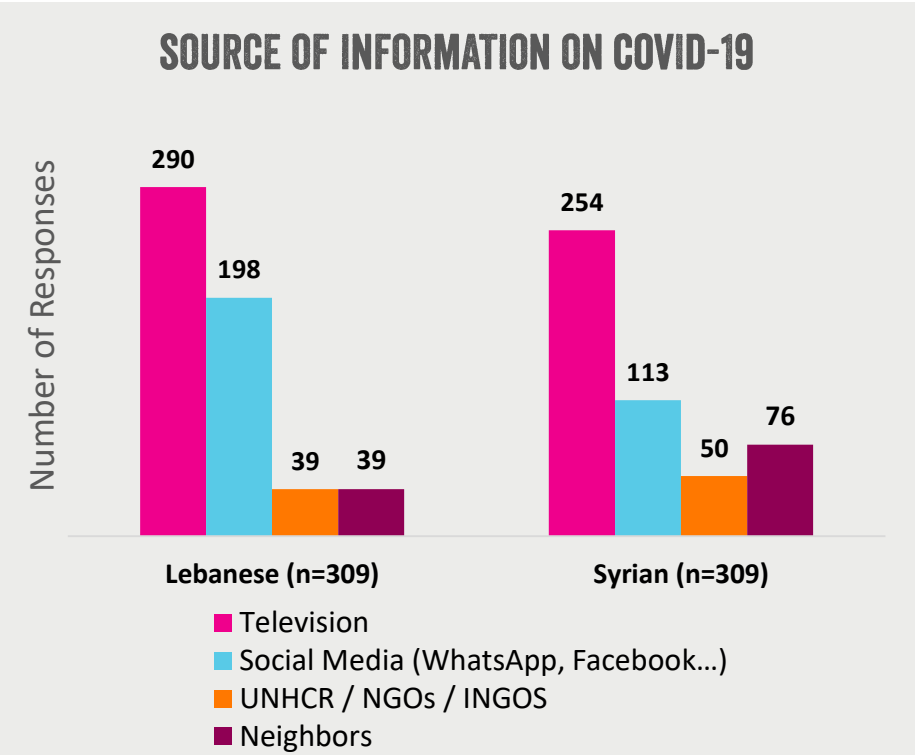
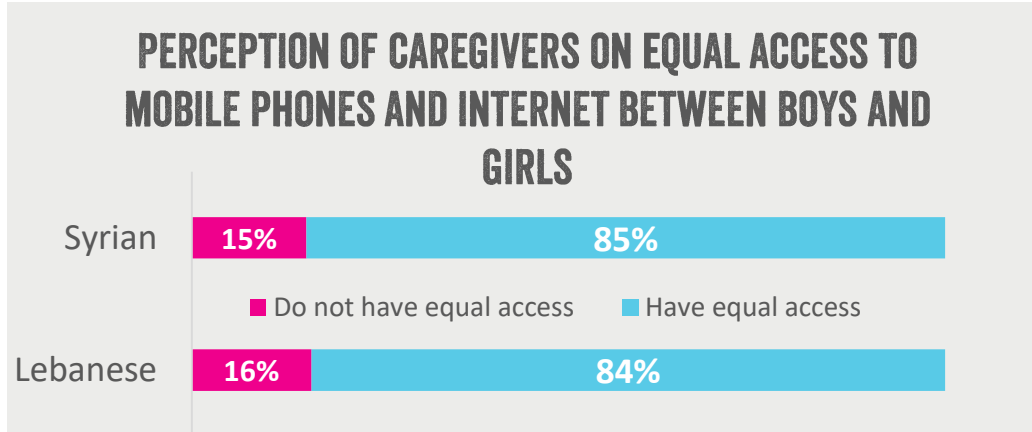
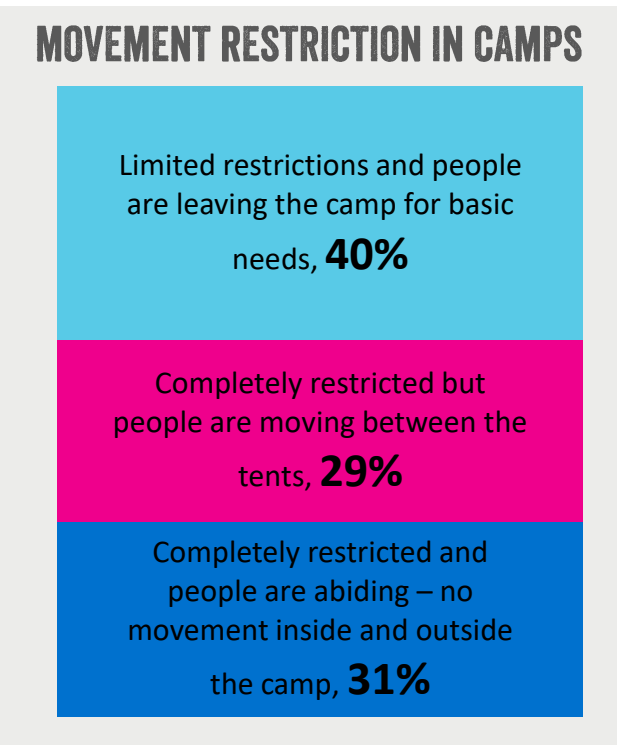
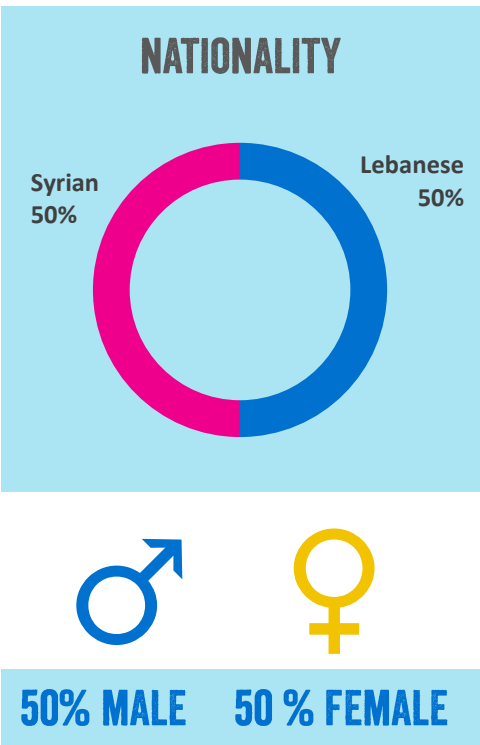
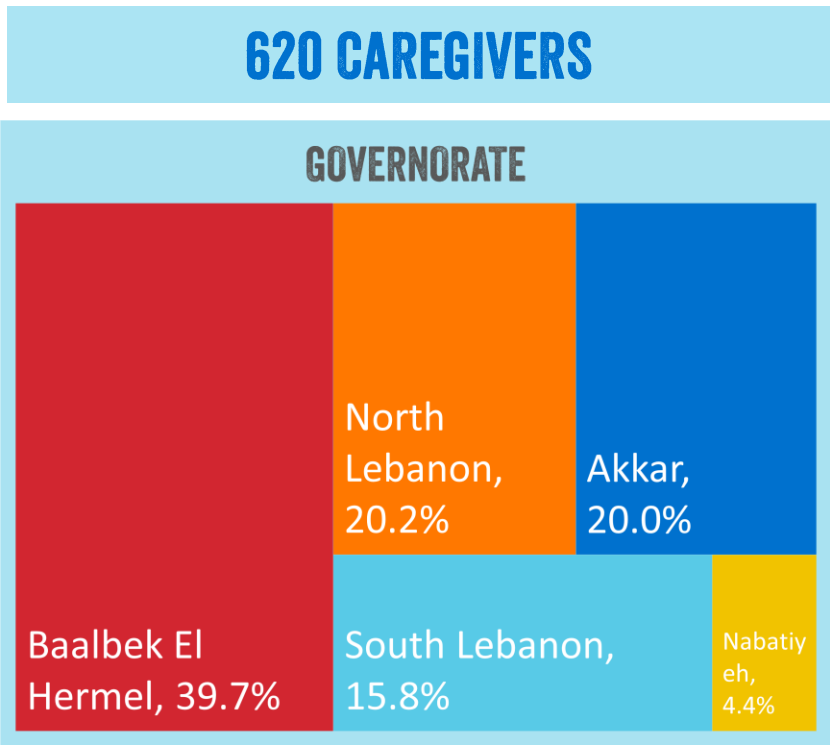
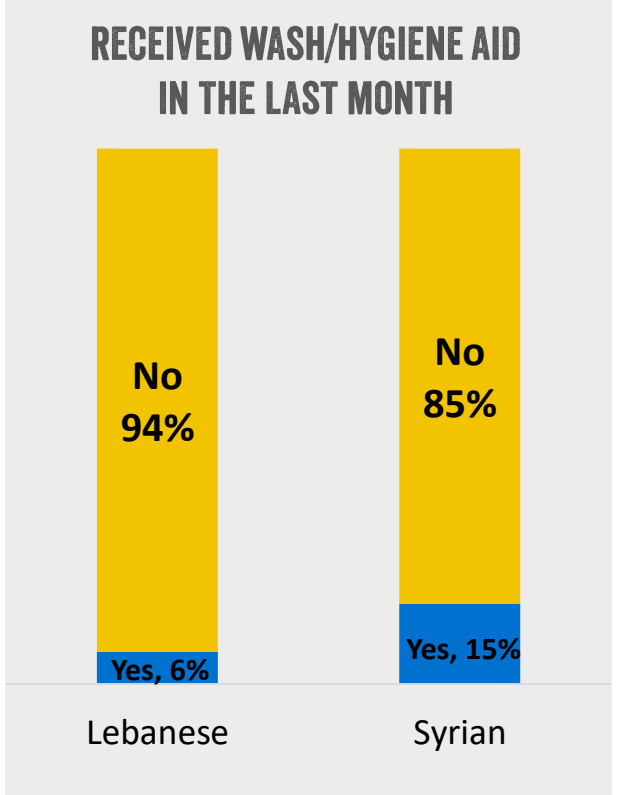
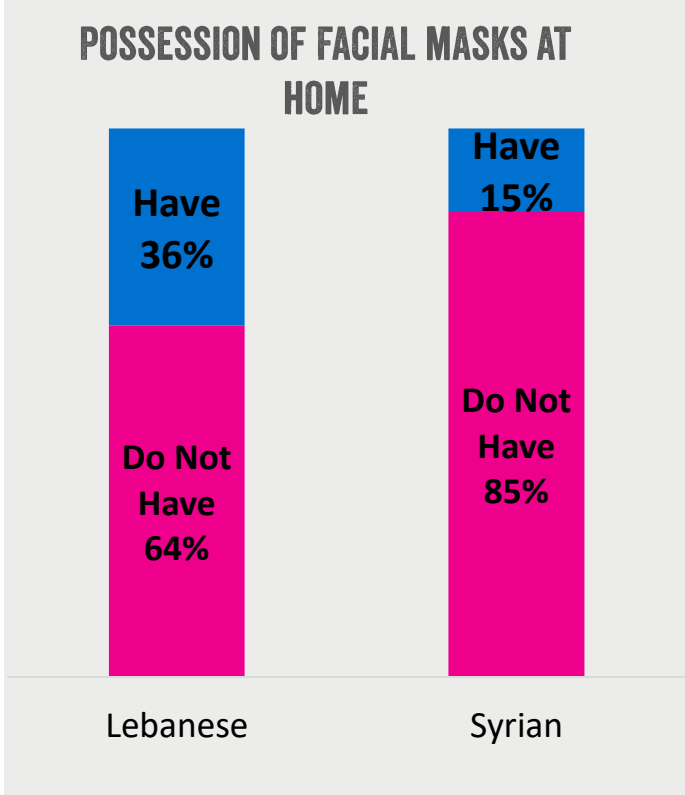
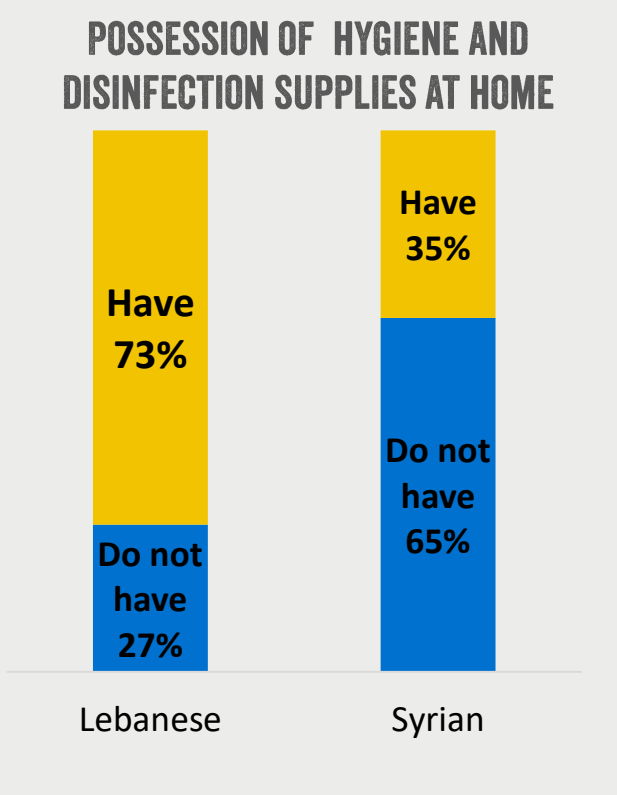


CAREGIVERS/PARENTS (1/2)



83% FEMALE RESPONDENTS* ARE NOT ACCESSING SRH SERVICES DUE TO FEARS OF CORONAVIRUS TRANSMISSION

**That usually have access to SRH facilities*

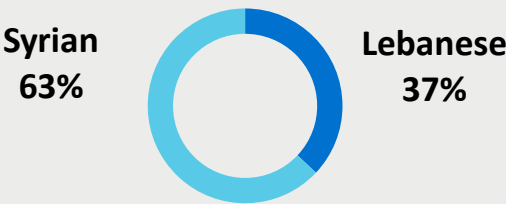


CAREGIVERS/PARENTS (2/2)

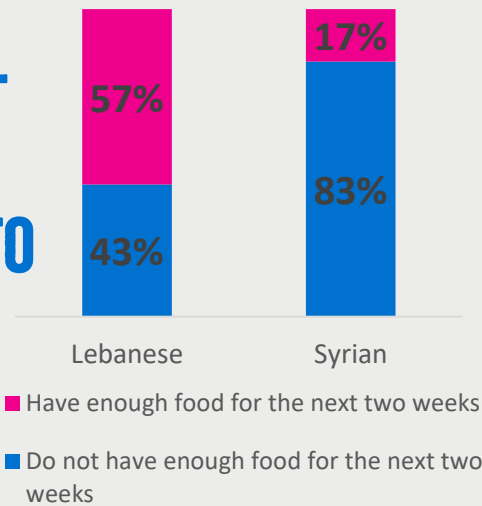
PROTECTION RISKS FACED BY WOMEN AND GIRLS,
OUT OF 309 FEMALE CAREGIVERS,

37% REPORTED DOMESTIC VIOLENCE
34% REPORTED THAT THEY DO NOT KNOW
20% REPORTED HARASSMENT OR DISCRIMINATION
11% REPORTED SEXUAL EXPLOITATION AND ABUSE

53% OF FEMALE CAREGIVERS DO NOT HAVE THE FINANCIAL MEANS TO BUY MENSTRUAL PADS ON A MONTHLY BASIS, OUT OF WHICH:

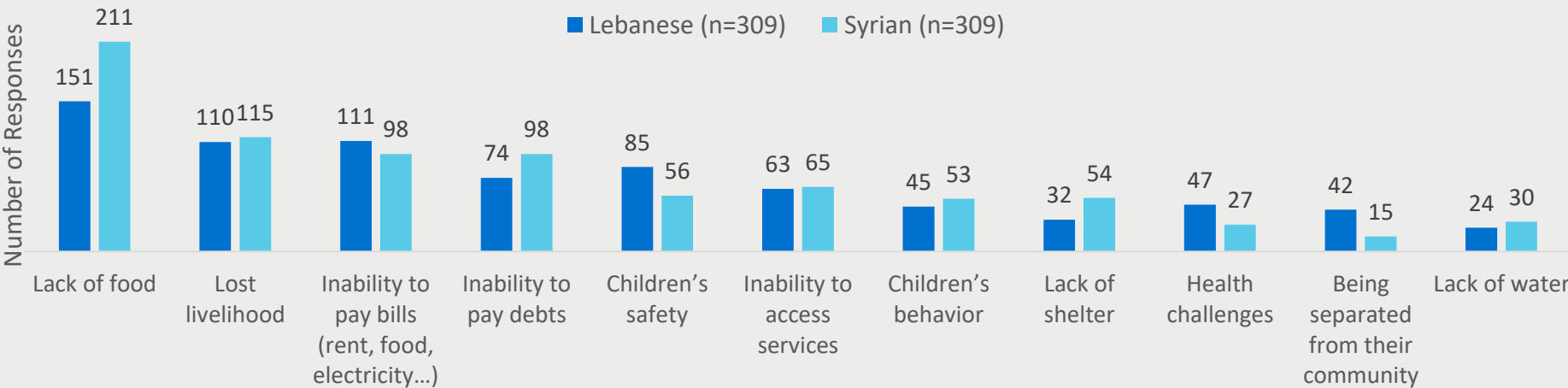


63% OF THE TOTAL CAREGIVERS DO NOT HAVE ENOUGH FOOD TO LAST THE NEXT TWO WEEKS

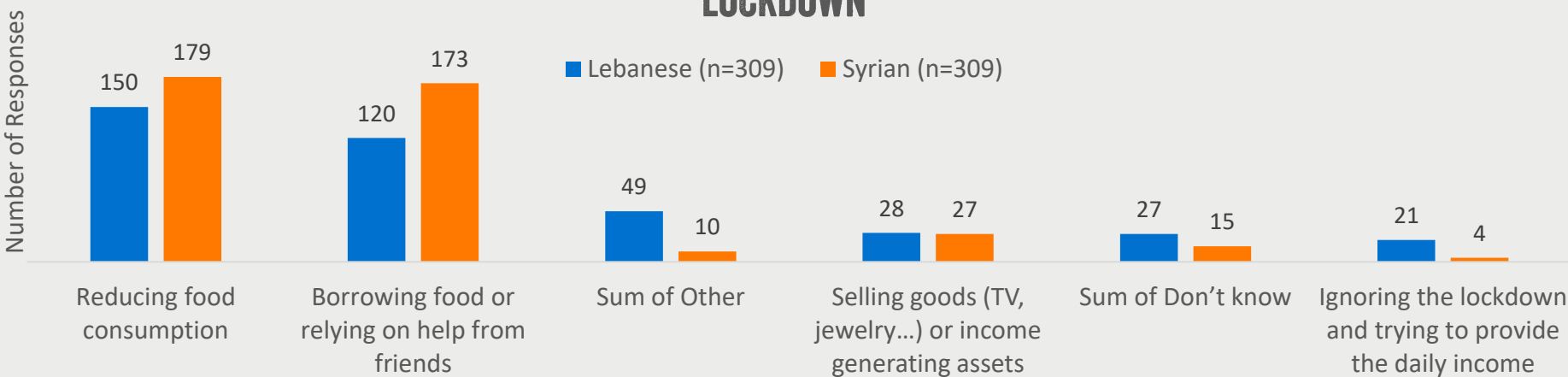


36% OF SYRIAN CAREGIVERS ARE ON HOUSING DEBT,
AND 25% ARE AT RISK OF EVICTION IF THE SITUATION CONTINUES.

MAIN SOURCES OF STRESS FOR CAREGIVERS SINCE THE LOCKDOWN



MAIN STRATEGIES FOR COPING WITH THE ECONOMIC DIFFICULTIES SINCE THE LOCKDOWN

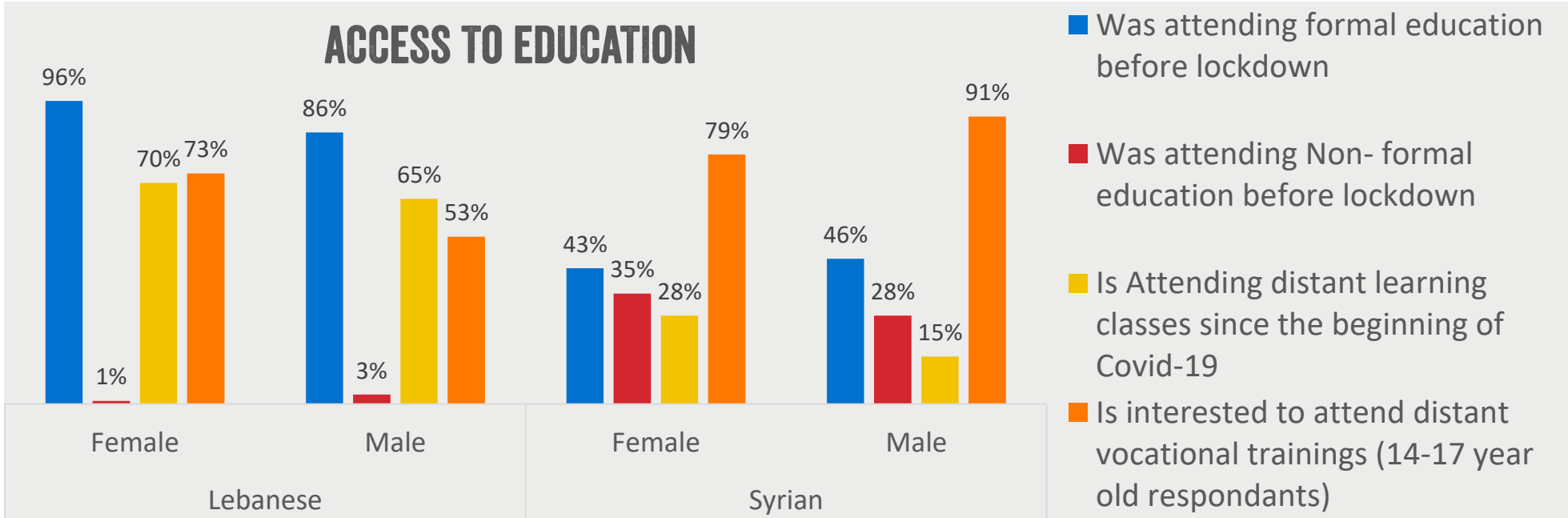
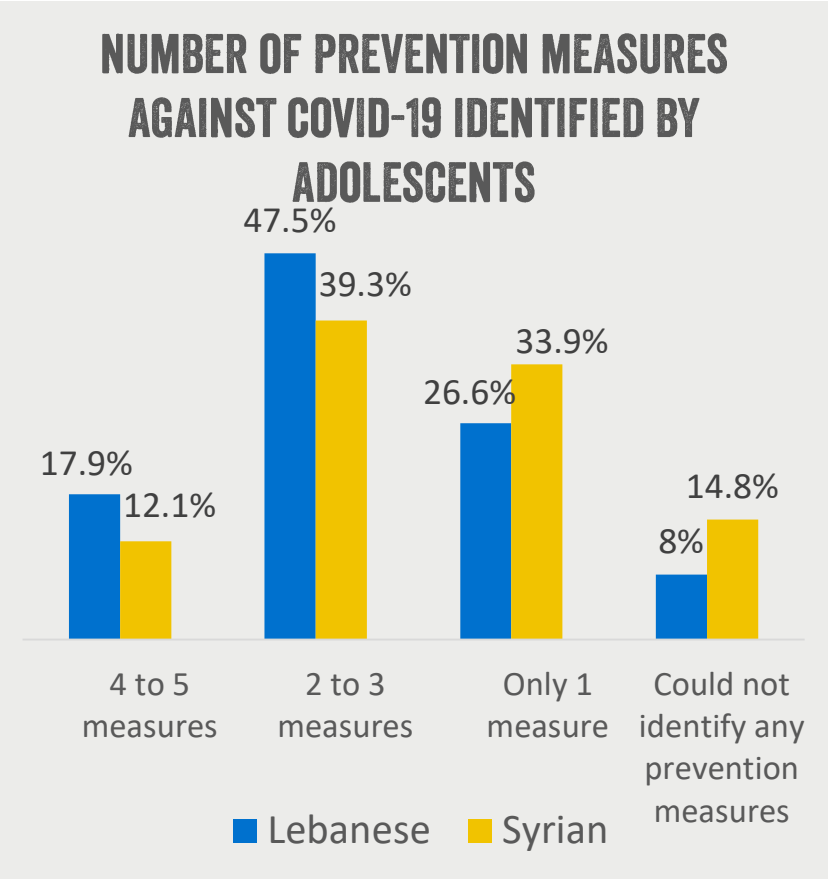
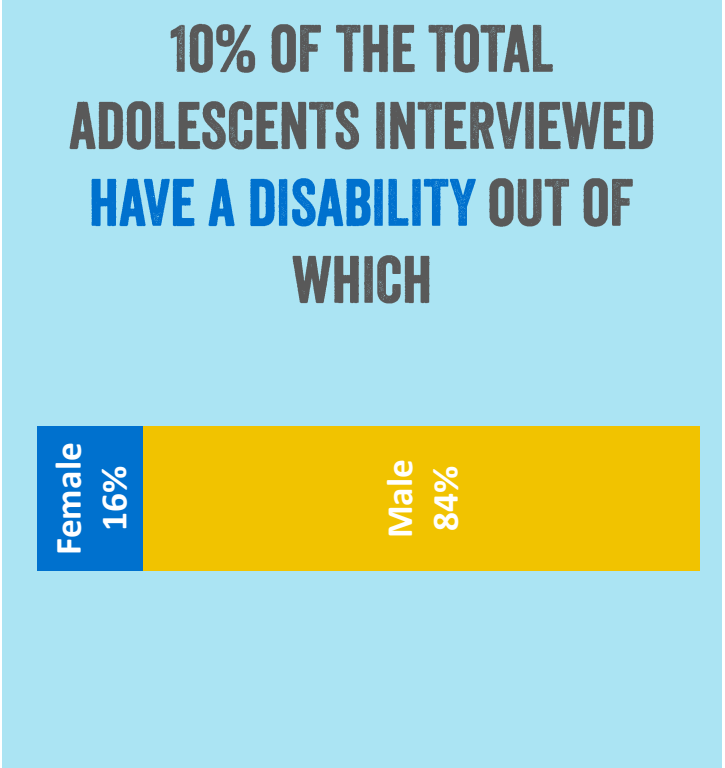
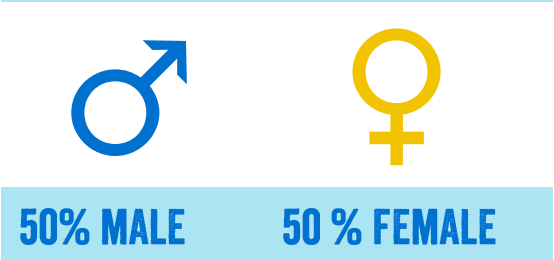
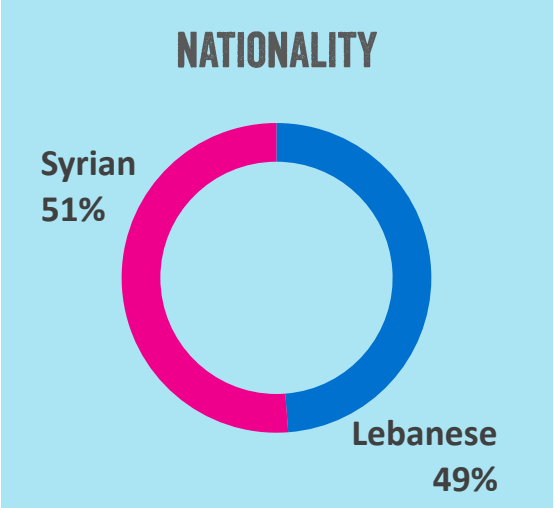
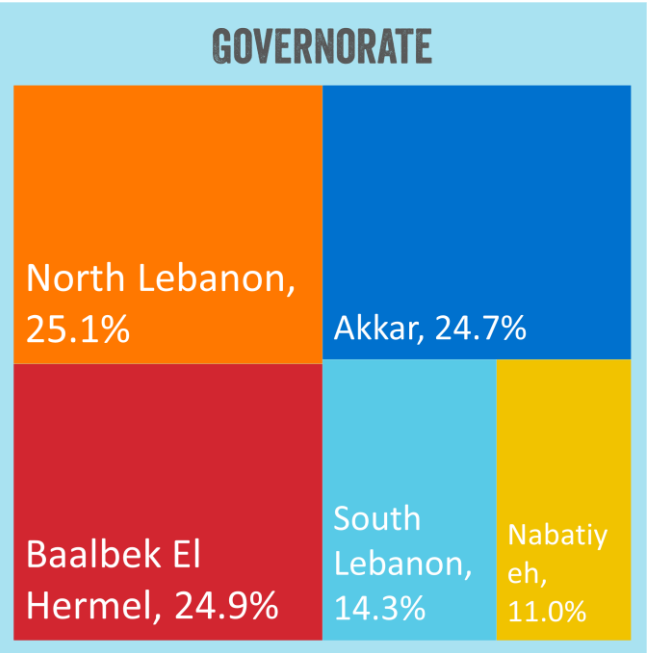


PLAN INTERNATIONAL LEBANON | APRIL 2020

COVID-19 NEEDS ASSESSMENT

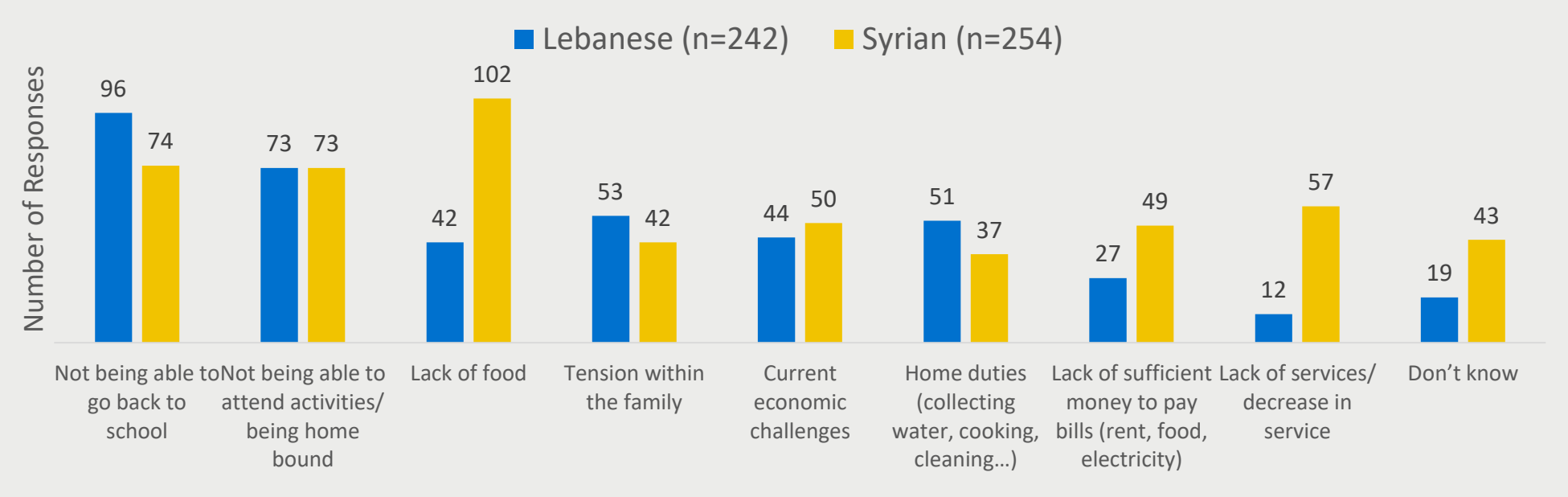
ADOLESCENTS (1/2)

498 ADOLESCENTS

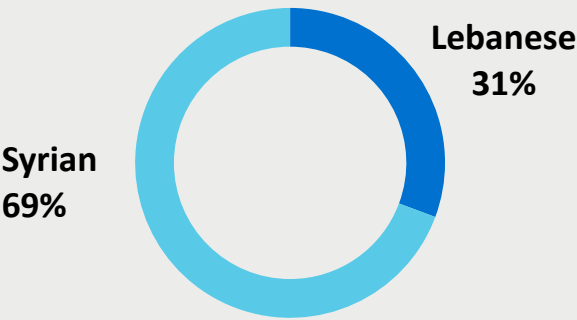


ADOLESCENTS (2/2)

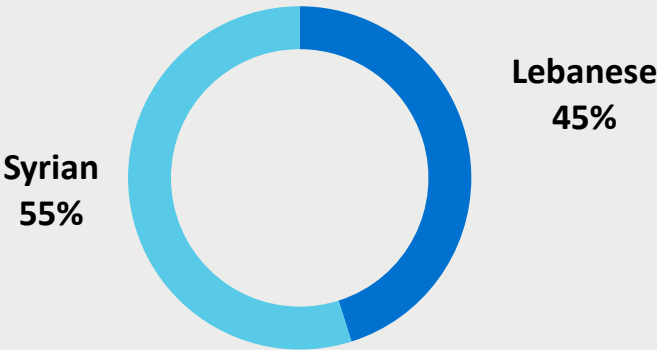
MAIN STRESS FACTORS DURING LOCKDOWN MENTIONED BY ADOLESCENTS



35% OF ADOLESCENT GIRLS DO NOT HAVE PHYSICAL ACCESS TO GET MENSTRUAL PADS, OUT OF WHICH:



66% OF ADOLESCENT GIRLS DO NOT HAVE THE FINANCIAL MEANS TO BUY MENSTRUAL PADS ON A MONTHLY BASIS OUT OF WHICH:



51% OF ADOLESCENT GIRLS HAVE REPORTED AN INCREASE IN TIME SPENT DOING HOUSEHOLD CHORES

WHILE 20% OF ADOLESCENT BOYS HAVE REPORTED AN INCREASE IN TIME SPENT DOING HOUSEHOLD CHORES

ADOLESCENTS ACCESS TO MOBILE PHONES (FOR REMOTE PROGRAMMING)

